



## North Lismore Flooding

### History of flooding

North Lismore sits on the Wilsons River, where floods have been recorded since the mid-1800s. The suburb has no levee, making it far more exposed than the CBD.

The February 2022 flood reached 14.37m, the highest on record, causing major damage across the city. Other major floods occurred in 1954 (12.27m), 1974 (12.19m), and 2017 (11.59m).

In the 2022 flood, North Lismore was submerged, with entire blocks isolated or underwater. Many houses and businesses experienced flooding inside and community evacuation routes closed early. Floods covered almost all of North Lismore, cutting off residents, damaging homes and businesses and forcing large-scale evacuations.

As North Lismore is one of the most flood-prone areas of the region, many locals face ongoing property damage.

Every flood is different. While NSW SES can provide guidance on what may occur in future floods, it's important to remember that predictions are not guarantees.



Lismore flooding  
Image credit: David Lowe

### North Lismore flooding

Without levee protection, North Lismore is among the first suburbs to be flooded in major weather events. The suburb can be cut off early by rising water on Bridge Street, Dunoon Road, and Leycester Street.

Past events, including the record 2022 flood, showed that people need to evacuate before rivers peak. Once roads are closed, it becomes harder to leave safely because there are fewer options. Even smaller floods can cut off access roads and leave pockets of the suburb isolated.

While the CBD levee reduces flood frequency for the city centre, North Lismore still gets flooded when the river rises, making it one of the highest-risk communities in the Lismore area.

Climate change is expected to bring heavier rainfall and rising sea levels, which will make flooding worse in North Lismore. Understand your flood risk, be prepared and make a plan.



North Lismore floods 2022  
Image credit: David Lowe



# Flood Information: Wilsons River Rowing Club Gauge

This information is gathered from historical flood data, local flood plans, and flood studies.

Height at gauge	Expected consequence
<b>14.37m</b>	<b>2022 record flood.</b> Catastrophic flooding across North Lismore.
<b>12.40m</b>	Modelled 1% AEP (1 in 100yr flood probability) – depths 2.2–2.6m; strong overland flow west of railway.
<b>12.27m</b>	1954 and 1974 flood peak – extensive flooding, major residential and commercial losses.
<b>12.19m</b>	
<b>11.59m</b>	2017 widespread flooding.
<b>9.70m</b>	<b>Major Flood Level</b> Extensive isolation and homes flooded.
<b>9.50m</b>	Last evacuation routes cut. Flooding of Terania Street cutting access to South Lismore via the Robert White bridge.
<b>9.20m</b>	
<b>8.50m</b>	Baillie, Pine, and Wotherspoon Streets and surrounding areas will be inundated by floodwater with no vehicle access.
<b>8.30m</b>	All low-lying roads flooded; only high roads passable.
<b>7.50m</b>	Homes in lower North Lismore may begin to be affected by floodwater. Winterton Parade homes which may become isolated.
<b>7.20m</b>	
<b>7.20m</b>	<b>Moderate Flood Level</b>
<b>7.00m</b>	Evacuation notification for lower North Lismore will be issued if flooding is predicted to exceed this level. North end of Pine Street affected by floodwater. Homes may become isolated.
<b>6.50m</b>	Alexandra Parade (Showground dip) is cut by floodwater preventing access to Dunoon Road.
<b>5.70m</b>	Bridge Street near McKenzie Park is cut by floodwater preventing access to Alexandra Parade. Trinity College carpark flooded.
<b>5.10m</b>	The Wilsons River begins to flow over the Simes Bridge, resulting in floodwater on Winterton Parade. Access is restricted in both directions.
<b>4.30m</b>	Slater Creek backs up; Pitt Street and McKenzie Park flooded near Richmond River High School.
<b>1.60m</b>	<b>Minor Flood Level</b> Currie Park begins to flood.

# Australian Warning System (AWS)

The Australian Warning System (AWS) is a national approach to help everyone easily identify the type of hazard and warning level. You may not always receive an official warning. If you notice the natural signs like rushing or pooling water, and heavy or prolonged rainfall - don't wait, leave low-lying areas if it's safe to do so.



## Advice

There is a heightened level of threat.  
Stay up to date as the situation changes.



Action  
Statements



Stay informed  
Monitor conditions



Reduced threat -  
Return with caution



## Watch and Act

Conditions are changing and you need to start  
taking action now to protect you and your family.



Action  
Statements



Do not enter floodwater  
Prepare to evacuate



Prepare to isolate  
Avoid the area



## Emergency Warning

You may be in danger and need to take action  
immediately.



Action  
Statements



Evacuate now /  
Evacuate before (time)



Shelter now  
Move to higher ground



## Download the Hazards Near Me app

### Hazards Near Me NSW

shows current information  
about local emergencies,  
including floods, storms  
and tsunamis, and advice  
on what to do to stay safe.

Scan the QR code  
to download



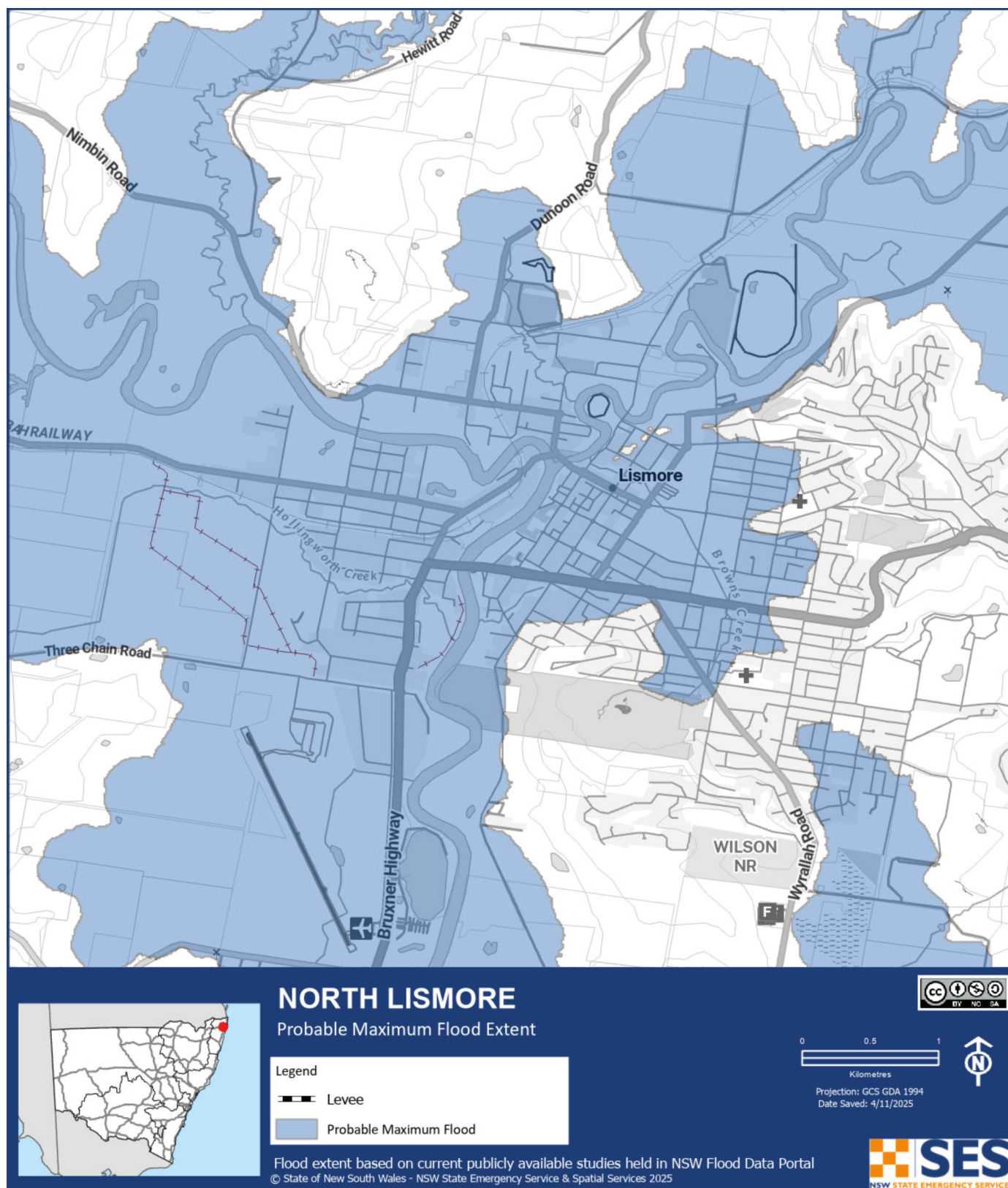
Set your **Watch Zones**  
and stay informed with  
notifications for new  
incidents and when  
information changes.

# North Lismore Flood Risk

## Probable Maximum Flood (PMF)

Probable Maximum Flood (PMF) is the largest flood that could conceivably be expected to occur at a particular location, usually estimated from probable maximum rainfall. The PMF defines the maximum extent of flood prone land, that is, the floodplain.

At the Wilsons River Rowing Club gauge, the PMF is estimated to be 16.55m.



If a flood exceeds the extent indicated on this map, NSW SES is not liable for any loss suffered as a result of reliance on this map.

# Get Prepared in the Richmond Valley Floodplain

These actions will help prepare your household for floods.  
Being prepared can save lives.

## How to prepare for flood:

### ☒ Know where to get updates and warnings

- Bureau of Meteorology: local weather updates.
- NSW State Emergency Service (NSW SES): information on floods and storms.
- ABC Radio: the official emergency broadcaster.

### ☒ Prepare an emergency kit

#### What to pack:

1. Health care items like medications and prescriptions.
2. Copies of your important documents (hard copies or stored digitally).
3. Important valuables and mementos.
4. Important phone numbers.
5. Radio, torch and batteries.
6. Clothing and personal items.

### ☒ Make a plan if you need to evacuate

Know where you will go, how you will get there, what evacuation routes you can use, what you will do with your animals, and how you will manage your health.

### ☒ Share your plan

Talk with your relatives, friends, and neighbours about what you will do if you need to evacuate.

## What to do during a flood:

### Follow NSW SES Flood Advice and Emergency Warnings

- Listen to your local ABC radio station for up to date flood information and advice.
- Follow advice from NSW SES if you are asked to evacuate, don't wait until it is too late.

### Take your emergency kit

- This should include your medications, prescriptions and any assistance equipment.

### Take your animals

- Put them on leads or in pet carriers.

### Know where to go

- Follow advice on evacuations and check live traffic information.
- Make your way to relatives or friends if you can.
- Official evacuation centres will be announced at the time of the emergency.

### Look out for each other

- Share information with family, friends, and neighbours and help each other or those who may need assistance.

## Key Contact Information

### Police, Fire and Ambulance

Triple Zero (000) for life-threatening emergencies.

### NSW SES

132 500 for emergency assistance in a flood, storm or tsunami.

### LiveTraffic

[livetraffic.com](http://livetraffic.com) for local road information

### Lismore City Council

(02) 6625 0500

[lismore.nsw.gov.au](http://lismore.nsw.gov.au)

**Lismore City Council Disaster Dashboard**  
[disaster.lismore.nsw.gov.au](http://disaster.lismore.nsw.gov.au)

### Radio Stations

ABC North Coast – 94.5FM / 738AM  
River FM – 92.9FM  
2LM – 104.3FM  
ZZZ FM – 100.9FM

### Local Land Services

1300 795 299

[lls.nsw.gov.au](http://lls.nsw.gov.au)



To learn more visit  
[ses.nsw.gov.au/  
northernrivers](http://ses.nsw.gov.au/northernrivers)

