

When there is a tsunami



About this information



This information is about what to do if there is a **tsunami**.



A **tsunami** is when very big waves happen after an earthquake under water.



The waves are very fast and can flood the beach and much of the land behind.



NSW State Emergency Service made this information.

We are called **NSW SES** for short.

How to find out about a tsunami



There are different ways to find out about a tsunami.



You can find out about a tsunami on

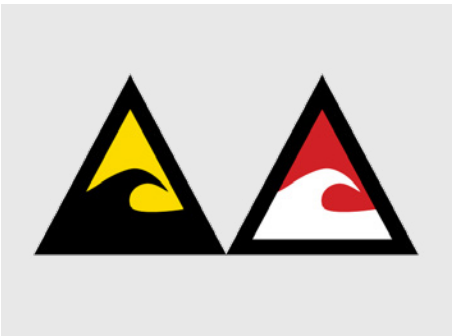
- The **Hazards Near Me** app
- NSW SES website **www.ses.nsw.gov.au**
- TV or the radio
- Social media like Facebook.



You might even hear a loud siren to let you know that a tsunami is coming.



It is important to know the different warnings for tsunamis.



The warnings tell you what to do if there is a dangerous tsunami.



To read our info guide about tsunami warnings go to

www.ses.nsw.gov.au

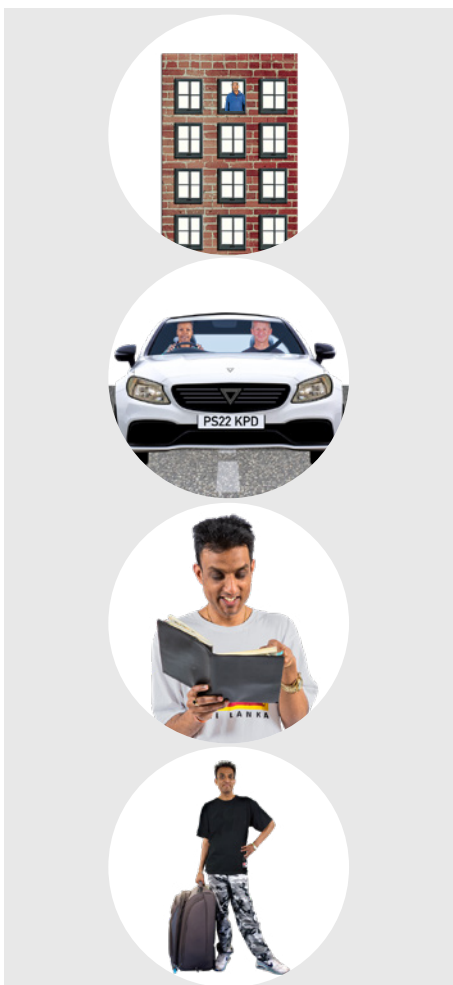


If you are in danger right now call 000.

What to do if there is a tsunami warning



If there is an emergency warning for a tsunami follow your **emergency plan**.



Your **emergency plan** should say

- Where a safe place to go is
- How to get there in a safe way
- Your emergency contacts
- What to bring.



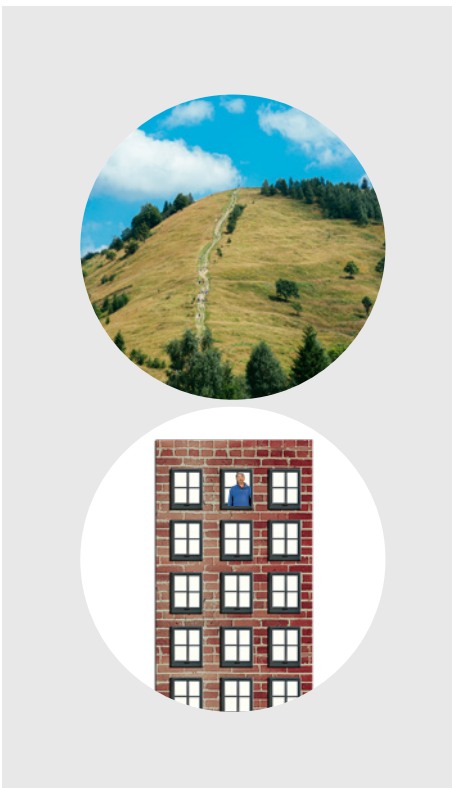
You must get away from the beach or river as fast as you can.



You should get away from the beach or river at least 1 km.



Do **not** stay to look at the waves.



You should go somewhere higher up like

- A hill
- A tall building with at least 3 storeys.



You should bring your **emergency kit** with you if you can.



Your emergency kit should have things like

- A radio that runs with batteries
- Torch
- Medicines you may need.



You should tell your family and friends that you are leaving and where you are going.



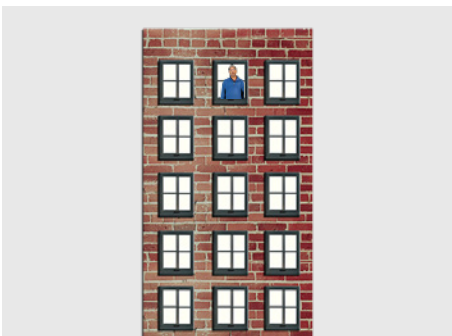
Take your pets with you when you have to leave.



You should also bring the important things you need for them like food and leash.



You should check on your neighbours if you can to see if they need help.



You should stay at the safe place until the emergency services say it is ok to go back.

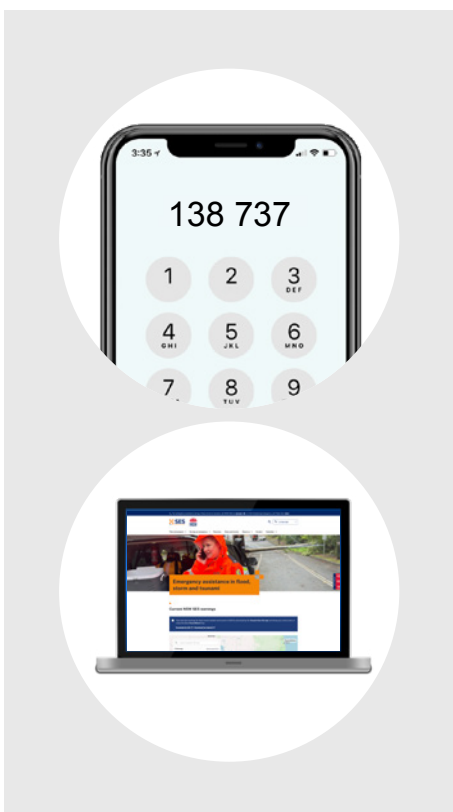
Contacts



Call **000** if you are in danger right now.

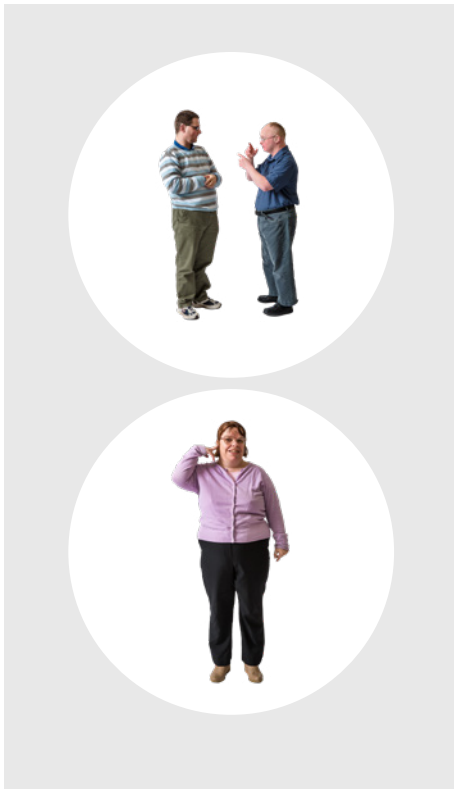


You can contact NSW SES for more information about tsunamis.



You can

- Call NSW SES on **138 737**
- Go to the website **www.ses.nsw.gov.au**



You can contact the National Relay Service if you are

- Deaf
- Have trouble hearing.



Go to their website **www.accesshub.gov.au** and ask for the NSW SES.

Council for Intellectual Disability made this document Easy Read. **CID** for short. You need to ask CID if you want to use any pictures in this document. You can contact CID at **business@cid.org.au**.