

Daily Darling River Summary

Issue 30, Friday 9th May 2025

KEY POINTS

- * **Paroo River:** Current rate of travel is approx. 2.0kms per day.
- * **Talyawalka Creek:** Is running. Currently water has not registered at the Barrier Highway gauge.
- * **Darling River** has peaked at Louth at moderate flood level. Flooding is also occurring at Tilpa (moderate) and Wilcannia (currently below minor and rising).

KEY	Rising	↑
	Steady	→
	Falling	↓

As at 3:00pm

River	Location	Type	Height (m)	Rise / Fall (cm)	Vol (ML/d)	Flood of Record	Predicted Height & Date
Warrego	Fords Bridge Bywash	Auto	2.36	↓	9	853	3.21m 1990
	- Fords Bridge Main Channel	Auto	1.45	↓	11	546	-
	- Combined Bywash & Main Channel	-	-	↓	-	1399	-
	- Toorale at the Dicks Dam	Auto	1.48	↓	2	1881	-
Cuttaburra	Cuttaburra Channel at Turra	Auto	1.71	↓	1	59	-
Paroo	Mt Jack	Manual	-	→	-	-	-
	Talalara (Paroo Overflow)	Manual	-	→	-	-	-
	Porters Crossing	Auto	0.65	→	-	-	-
Darling	Bourke	Auto	6.79	↓	93	17743	14.18m 1976
	Louth	Auto	10.20	↓	7	36448	13.94m 1890
	Tilpa	Auto	10.49	↑	11	30845	13.35m 1976
	Trevallyn	Auto	11.60	↑	19	29013	11.93m 1976
	Wilcannia	Auto	8.81	↑	9	23505	11.59m 1976
	Nelia Gaari	Auto	63.15	↑	5	-	-
Talyawalka	Wilga (NPWS)	Property	Running	→	-	-	-
	At Barrier Hwy	Auto	0.69	-	-	-	-

* Nil height to report at present.

Data Sources

1. WaterNSW
2. Bureau of Meteorology

Requests for Assistance

NSW SES
132 500

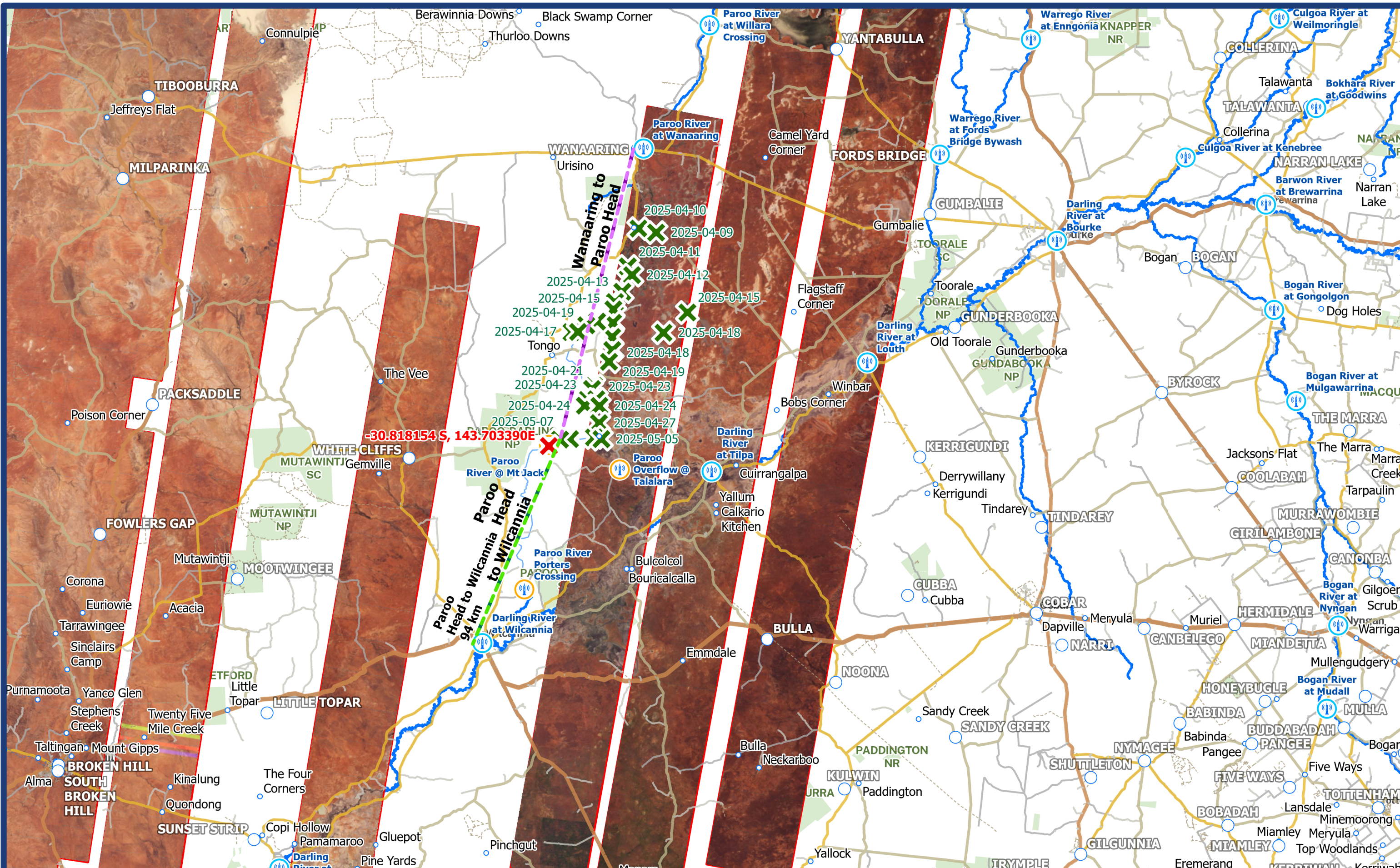
Agriculture & Animal Services Function Area (AASFA)
1800 814 647

Contact us

For more information, please contact Western Zone via:
e: wzt.ops@ses.nsw.gov.au
w: www.ses.nsw.gov.au

Access the latest warnings
and information via
www.hazardwatch.gov.au





- Legend
- BOM River Gauges
 - Water NSW Temp Gauge
 - Headwater Coordinate
 - Paroo Head to Wilcannia
 - Wanaaring to Paroo Head
- Name

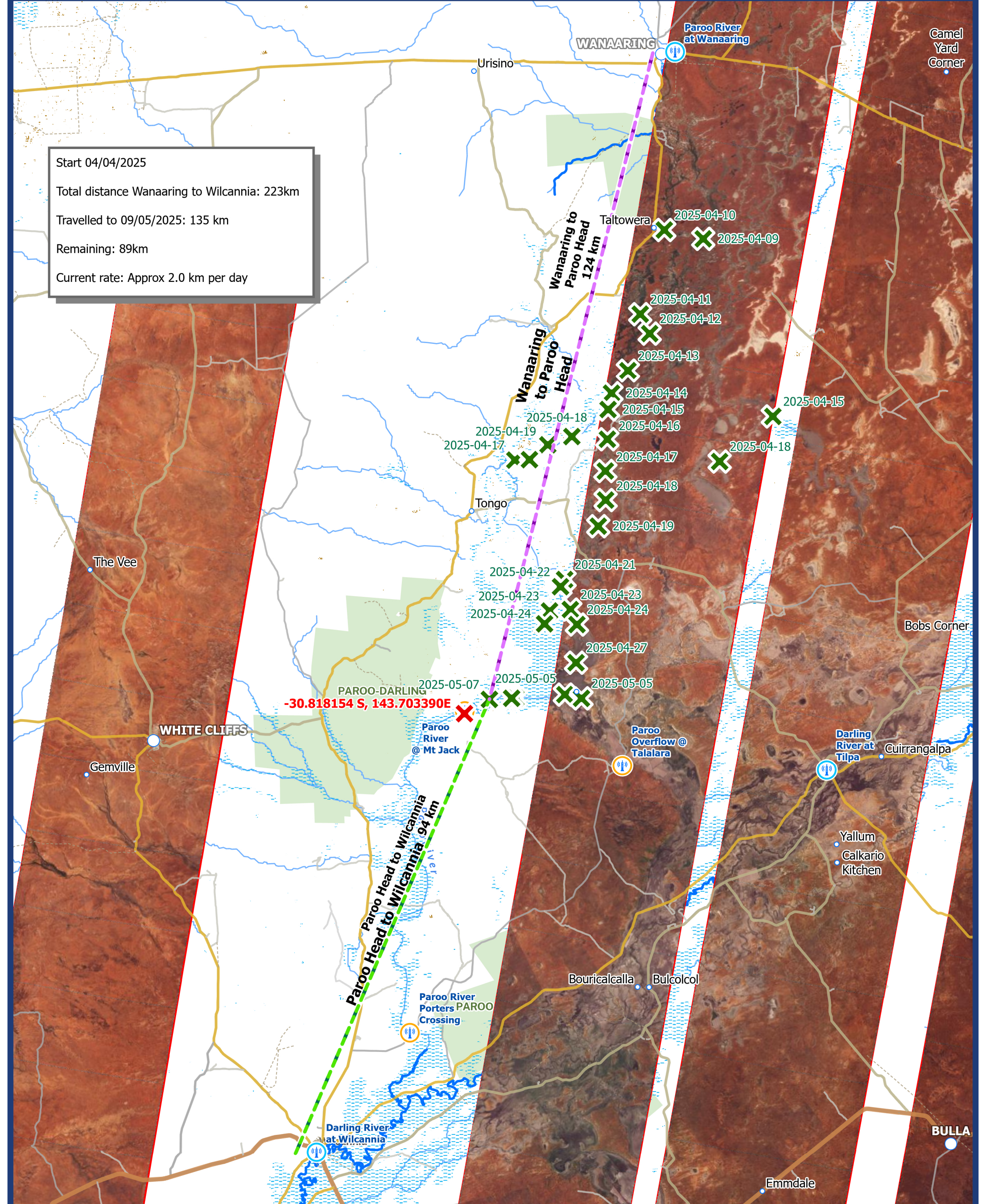
Western Zone Overview
PLANET Image Date: 08 May 2025
Map: 09 May 2025 09:00am

Disclaimer
Imagery: Image © 2025 Planet Labs PBC

0 25 50
Kilometres

Projection: GDA 1994 NSW Lambert
Date Saved: 9/05/2025

CC BY-NC-SA



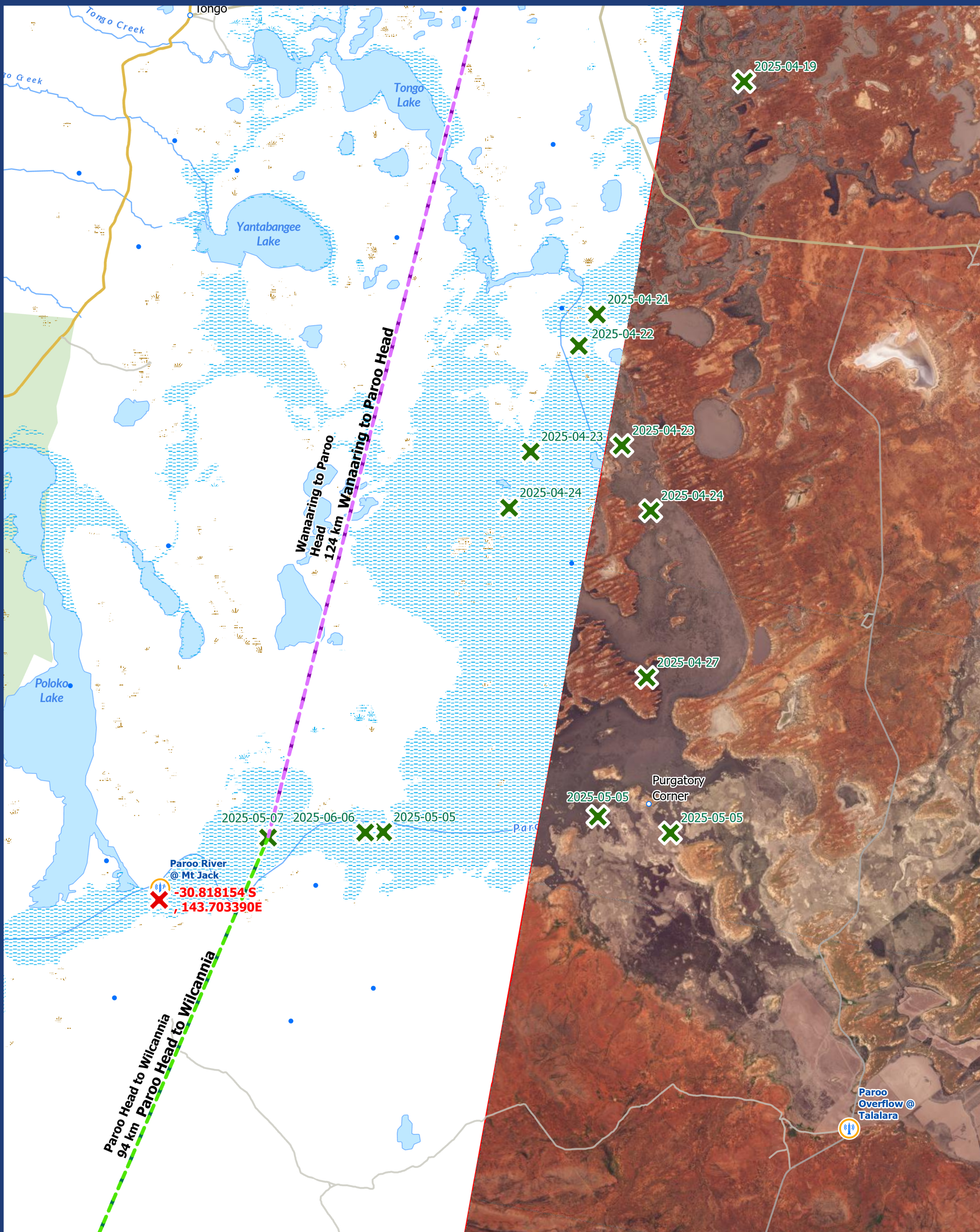
Start 04/04/2025

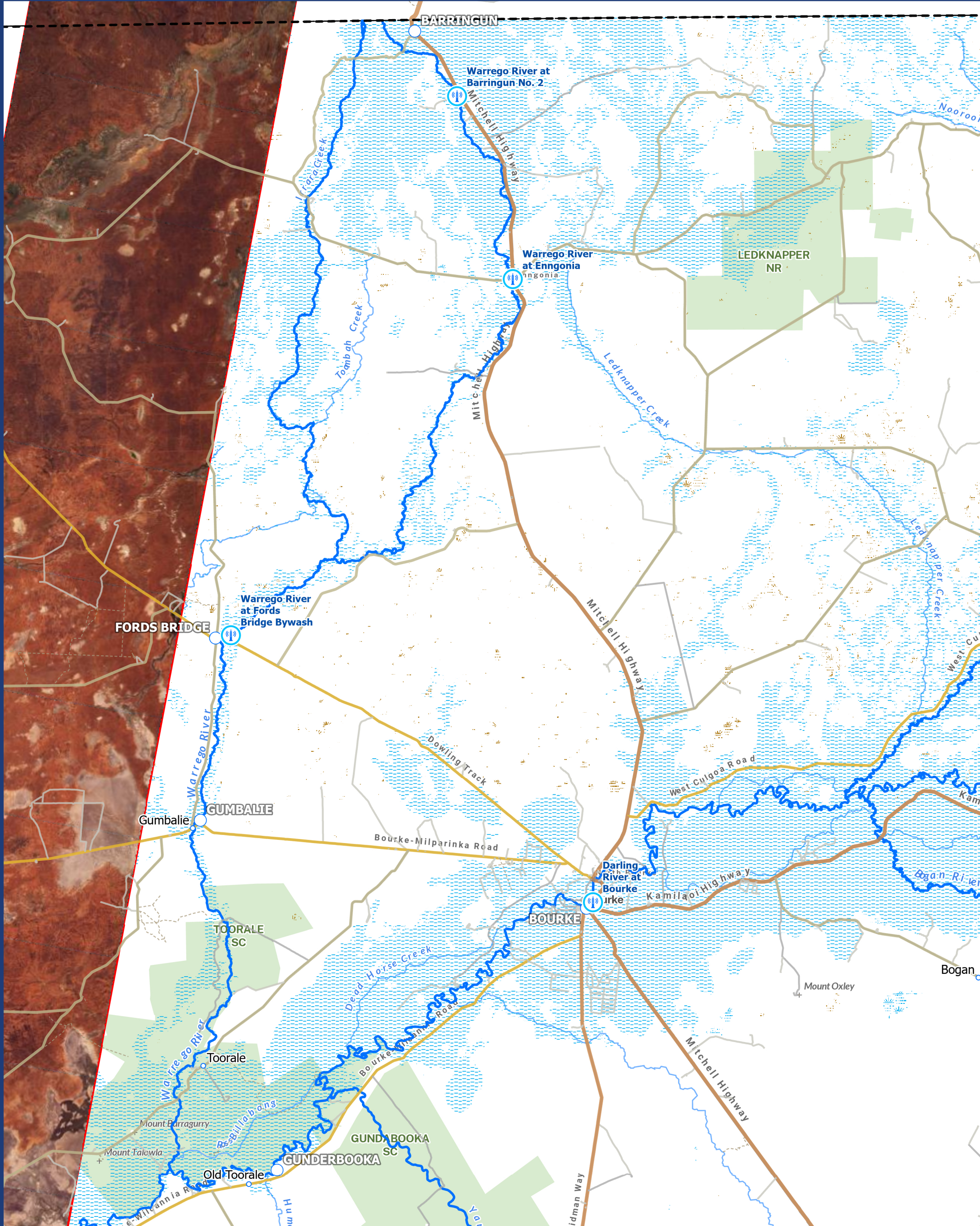
Total distance Wanaaring to Wilcannia: 223km

Travelled to 09/05/2025: 135 km

Remaining: 89km

Current rate: Approx 2.0 km per day





N

0 5 10 15 20 km

Disclaimer
Imagery: Image © 2025 Planet Labs PBC

7 April 25

8 April 25

6 April 25

7 April 25

8 April 25

10 April 25

11 April 25

10 April 25

11 April 25

12 April 25

13 April 25

14 April 25

15 April 25

16 April 25

17 April 25

18 April 25

19 April 25

22 April 2025

23 April 25

24 April 2025

25 April 2025

26 April 2025

27 April 2025

28 April 2025

29 April 2025

05 May 2025

06 May 2025

07 May 2025

08 May 2025

09 May 2025

10 May 2025

11 May 2025

12 May 2025

13 May 2025

Gorge
Loop Road

Narriearra Road

Tibooburra
Road

The
Cut Line

Bulloo system

Image: PLANET Daily Imagery / 07 May 2025

The Cut Line The Cut Line The Cut Line

© Depart

