

Daily Darling River Summary

Issue 21, Wednesday 30th April 2025

KEY POINTS

- * **Darling River:** Bourke peaked 29/04/2025 (10.64m). BOM warnings have been updated TODAY 30/04/2025 with lower peaks expected at Louth and Tilpa.
- * **Paroo River:** May reach the Mt Jack and Talalara gauges during week of 05/05/2025.
- * **Talyawalka Creek:** Air reconnaissance was conducted this morning and confirms water has started making its way into the creek. Confirmed by NPWS.



(as at 12pm)

River	Location	Type	Height (m)	Rise / Fall (cm)	Vol (ML/d)	Flood of Record	Predicted Height & Date	
Warrego	Fords Bridge Bywash	Auto	2.86	↓	4	1673	3.21m 1990	-
	- Fords Bridge Main Channel	Auto	2.22	↓	6	4448	-	-
	- Combined Bywash & Main Channel	-	-	↓	-	6121	-	-
	- Toorale at the Dicks Dam	Auto	1.61	↑	0.1	2903	-	-
Cuttaburra	Cuttaburra Channel at Turra	Auto	1.92	↓	4	555	-	-
Paroo	Mt Jack	Manual	-	→	-	-	-	-
	Talalara (Paroo Overflow)	Manual	-	→	-	-	-	-
	Porters Crossing	Auto	0.64	↑	-	-	-	-
Darling	Bourke	Auto	10.63	↓	1	39745	14.18m 1976	Peaked Min
	Louth	Auto	9.55	↑	16	31046	13.94m 1890	10.30m Mod 6/05/2025
	Tilpa	Auto	9.09	↑	14	24569	13.35m 1976	11.00m Mod 10/05/2025
	Trevallyn	Auto	10.27	↑	16	23071	11.93m 1976	-
	Wilcannia	Auto	7.74	↑	17	19273	11.59m 1976	9.0m Min 15/05/2025
	Nelia Gaari	Auto	62.45	↑	10	-	-	-
Talyawalka	Wilga (NPWS)	Property	Running	↑	-	-	-	-
	At Barrier Hwy	Auto	*Nil	-	-	-	-	-

* Nil height to report at present.

Data Sources

1. WaterNSW
2. Bureau of Meteorology

Requests for Assistance

NSW SES
132 500

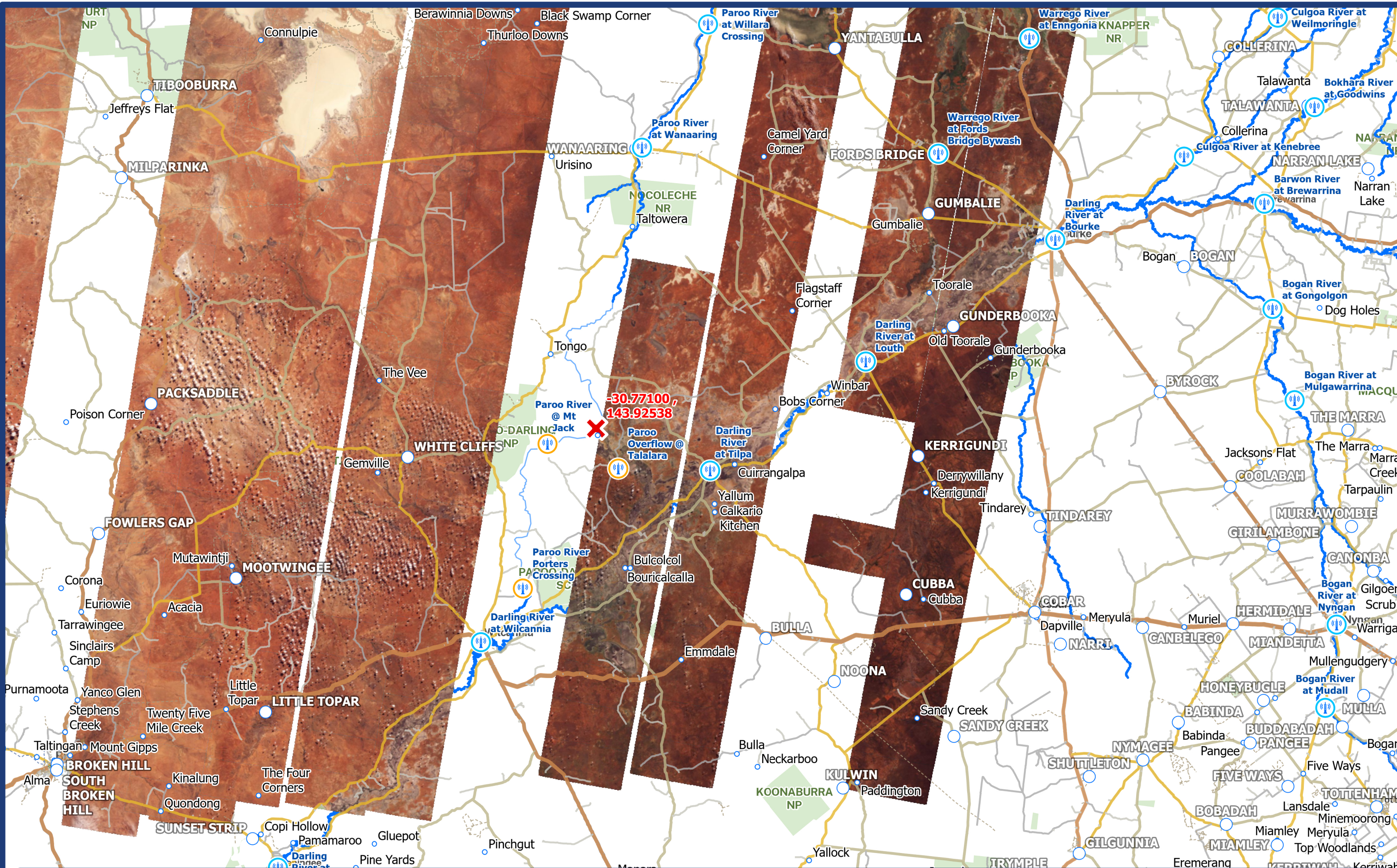
Agriculture & Animal Services Function Area (AASFA)
1800 814 647

Contact us

For more information, please contact Western Zone via:
e: wtz.ops@ses.nsw.gov.au
w: www.ses.nsw.gov.au

Access the latest warnings
and information via
www.hazardwatch.gov.au





Legend

- BOM River Gauges
- Water NSW Temp Gauge
- Headwater Coordinate

Western Zone Overview
PLANET Image Date: 29 APRIL 2025
Map: 30 APRIL 2025 09:00am

Disclaimer
Imagery: Image © 2025 Planet Labs PBC



Projection: GDA 1994 NSW Lambert
Date Saved: 30/04/2025



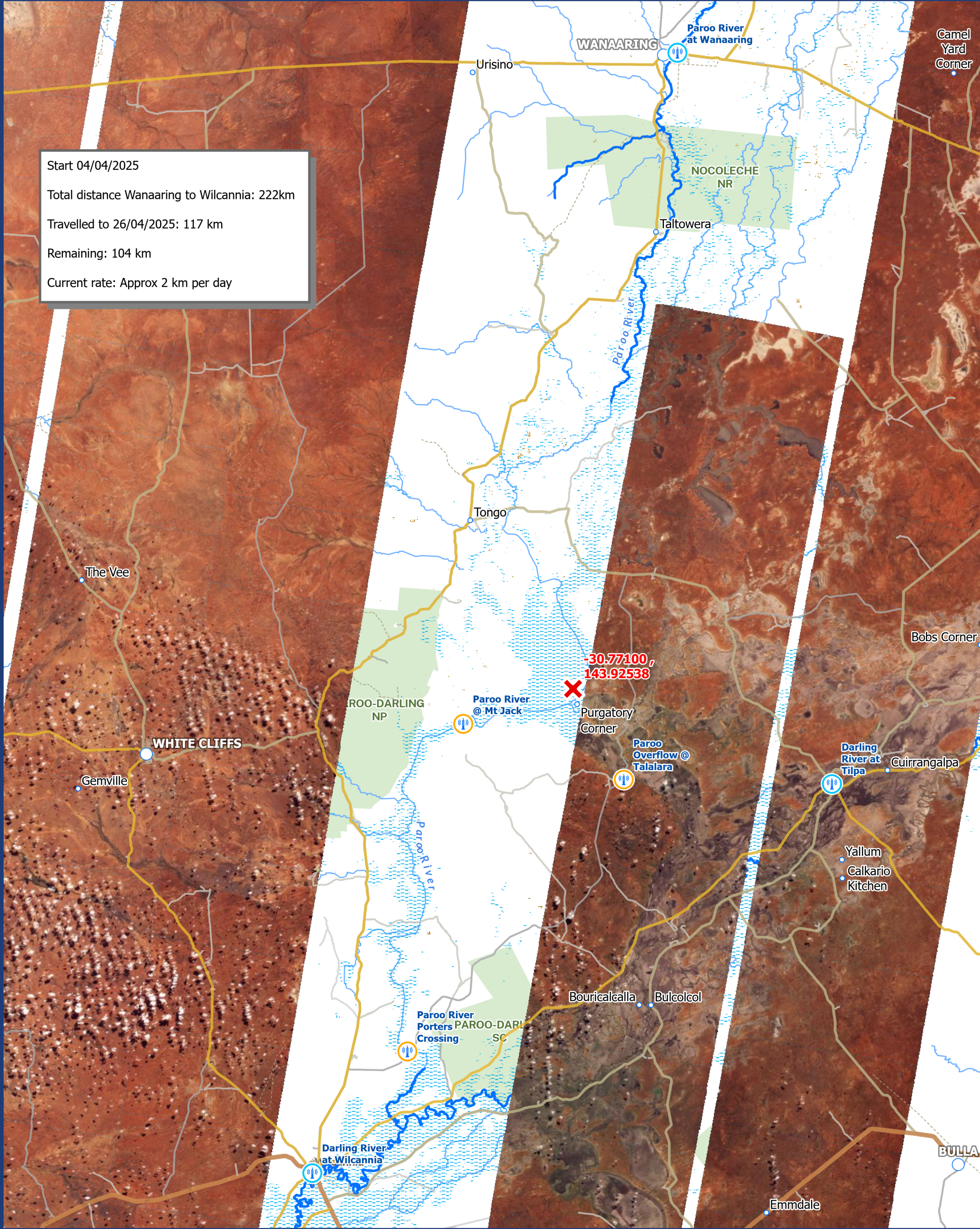
Start 04/04/2025

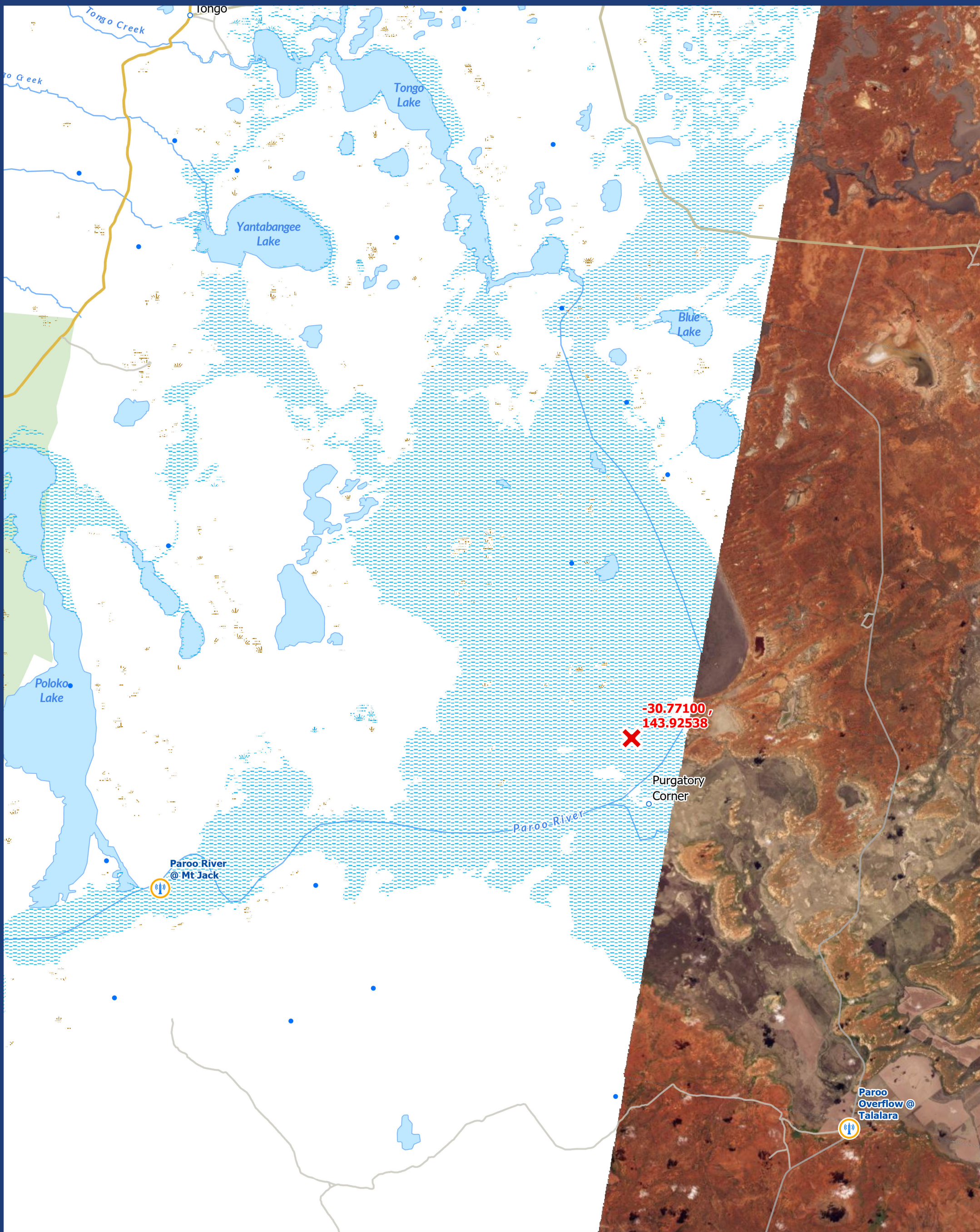
Total distance Wanaaring to Wilcannia: 222km

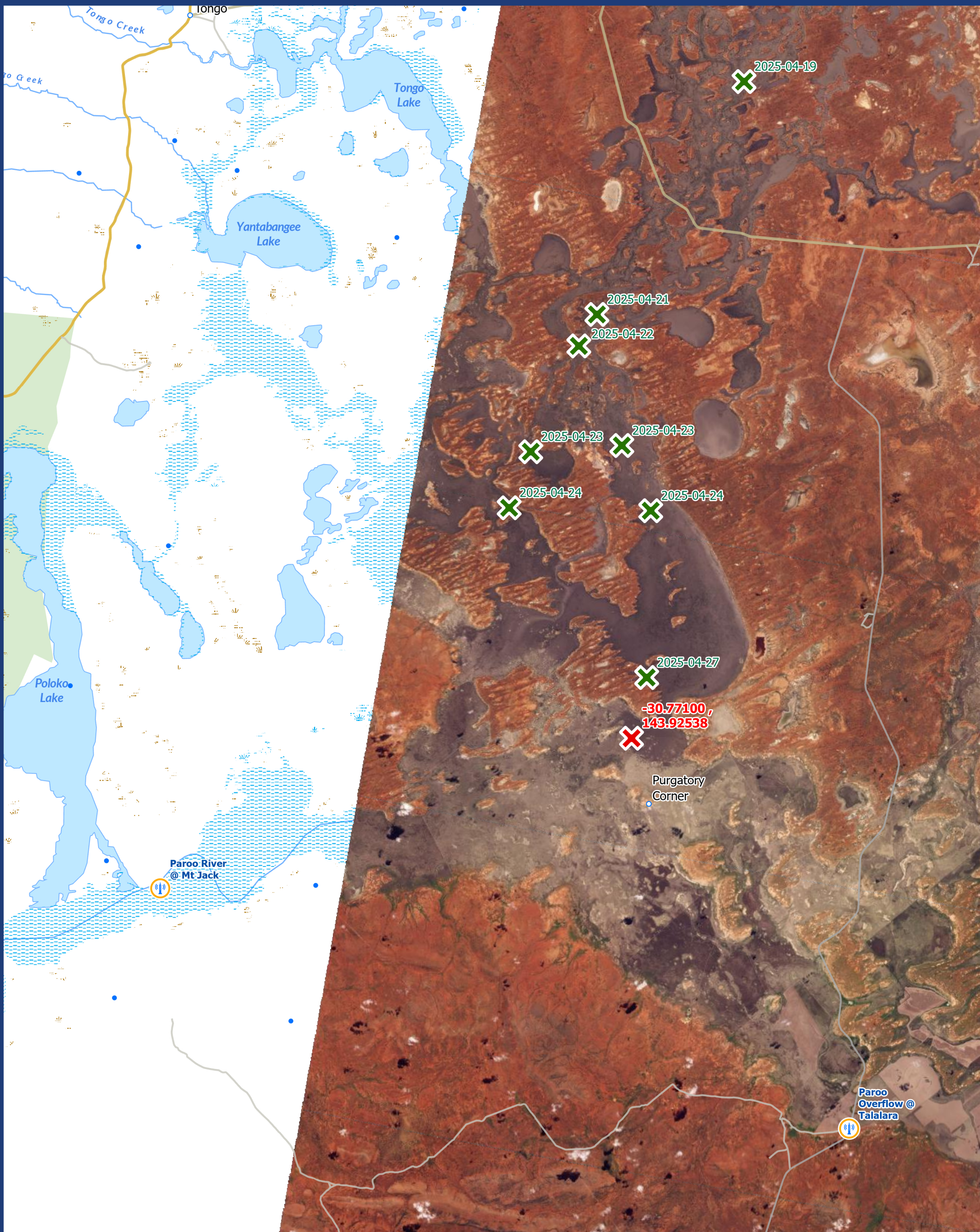
Travelled to 26/04/2025: 117 km

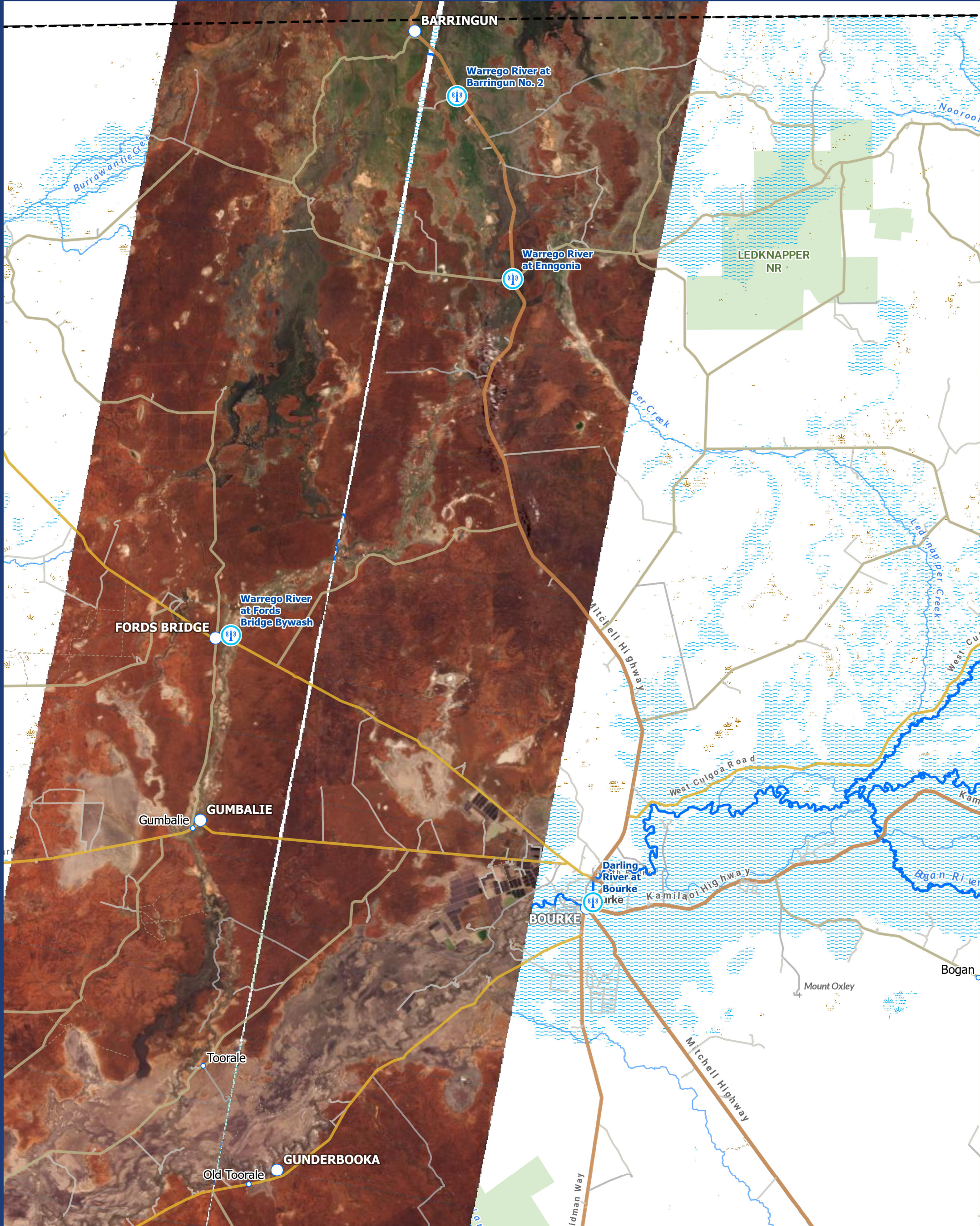
Remaining: 104 km

Current rate: Approx 2 km per day









N

0 5 10 15 20 km

Disclaimer
Imagery: Image © 2025 Planet Labs PBC

7 April 25

8 April 25

6 April 25

7 April 25

8 April 25

10 April 25

11 April 25

10 April 25

11 April 25

12 April 25

13 April 25

14 April 25

15 April 25

16 April 25

17 April 25

18 April 25

19 April 25

20 April 25

21 April 25

22 April 25

23 April 25

24 April 25

25 April 25

29 April 2025

11 km on 29 April 25

Gorge Loop Road

Narriearra Road

Narriearra Road

Tibooburra Road

The Cut Line

The Cut Line The Cut Line

Bulloo system

Image: PLANET Daily Imagery / 29 April 2025

© Departm

