

# Daily Darling River Summary

Issue 18, Sunday 27th April 2025

## KEY POINTS

- \* Barwon River at Brewarrina fell below the minor flood level on Saturday 26th April 2025
- \* Paroo River headwaters at approx. -30.69977 S, 143.93978 E (as at 26/04/2025).
- \* Paroo River headwaters are expected to reach the Mt Jack and Talalara gauges from 30/04/2025.
- \* NSW SES is liaising with NPWS whom are monitoring Talyawalka Creek at Wilga to confirm when it is running.
- \* NOTE: Due to cloud coverage, the Satellite imagery is reduced.

**KEY** Rising ↑  
Steady →  
Falling ↓

(as at 6am)

River	Location	Type	Height (m)		Rise / Fall (cm)	Vol (ML/d)	Flood of Record	Predicted Height & Date	
Barwon	Brewarrina	Auto	6.16	↓	20	26034	<b>12.14m</b> 1893	<b>PEAKED</b> Min	-
	- Brewarrina (Total Flow)	Auto	-	↓	-	37200	- -	- -	-
Culgoa	Kenebree	Auto	4.50	↓	36	4537	<b>7.50m</b> 1893	<b>PEAKED</b> Mod	-
Warrego	Fords Bridge Bywash	Auto	3.00	↑	1	2467	<b>3.21m</b> 1990	<b>PEAKED</b> Mod	-
	- Toorale at the Dicks Dam	Auto	1.54	↑	5.8	2230	- -	- -	-
Cuttaburra	Cuttaburra Channel at Turra	Auto	2.04	↓	4	960	- -	- -	-
Paroo	Wanaaring	Manual	2.61	↓	12	-	<b>4.88m</b> 1990	<b>PEAKED</b> Maj	-
	Mt Jack	Manual	-	→	-	-	- -	- -	-
	Talalara (Paroo Overflow)	Manual	-	→	-	-	- -	- -	-
	Porters Crossing	Auto	0.64	→	-	-	- -	- -	-
Darling	Bourke	Auto	10.47	↑	13	38309	<b>14.18m</b> 1976	<b>11.20m</b> Min	29/04/2025
	Louth	Auto	9.04	↑	19	27490	<b>13.94m</b> 1890	<b>10.90m</b> Mod	6/05/2025
	Tilpa	Auto	8.61	↑	20	22656	<b>13.35m</b> 1976	<b>11.40m</b> Mod	10/05/2025
	Trevallyn	Auto	9.75	↑	19	21046	<b>11.93m</b> 1976	- -	-
	Wilcannia	Auto	7.19	↑	18	17478	<b>11.59m</b> 1976	<b>9.0m</b> Min	15/05/2025
	Nelia Gaari	Auto	62.03	↑	18	-	- -	- -	-

# Daily Darling River Summary

Issue 18, Sunday 27th April 2025

River	Location	Type	Height (m)		Rise / Fall (cm)	Vol (ML/d)	Flood of Record	Predicted Height & Date	
Talyawalka	Wilga (NPWS)	Property	-	➔	-	-	-	-	-
	At Barrier Hwy	Auto	Error*		-	-	-	-	-

\* Error continues to be investigated.

■ **Data Sources**

- 1. WaterNSW
- 2. Bureau of Meteorology

■ **Requests for Assistance**

NSW SES  
**132 500**

Agriculture & Animal Services Function Area (AASFA)  
**1800 814 647**

Access the latest warnings  
and information via  
[www.hazardwatch.gov.au](http://www.hazardwatch.gov.au)

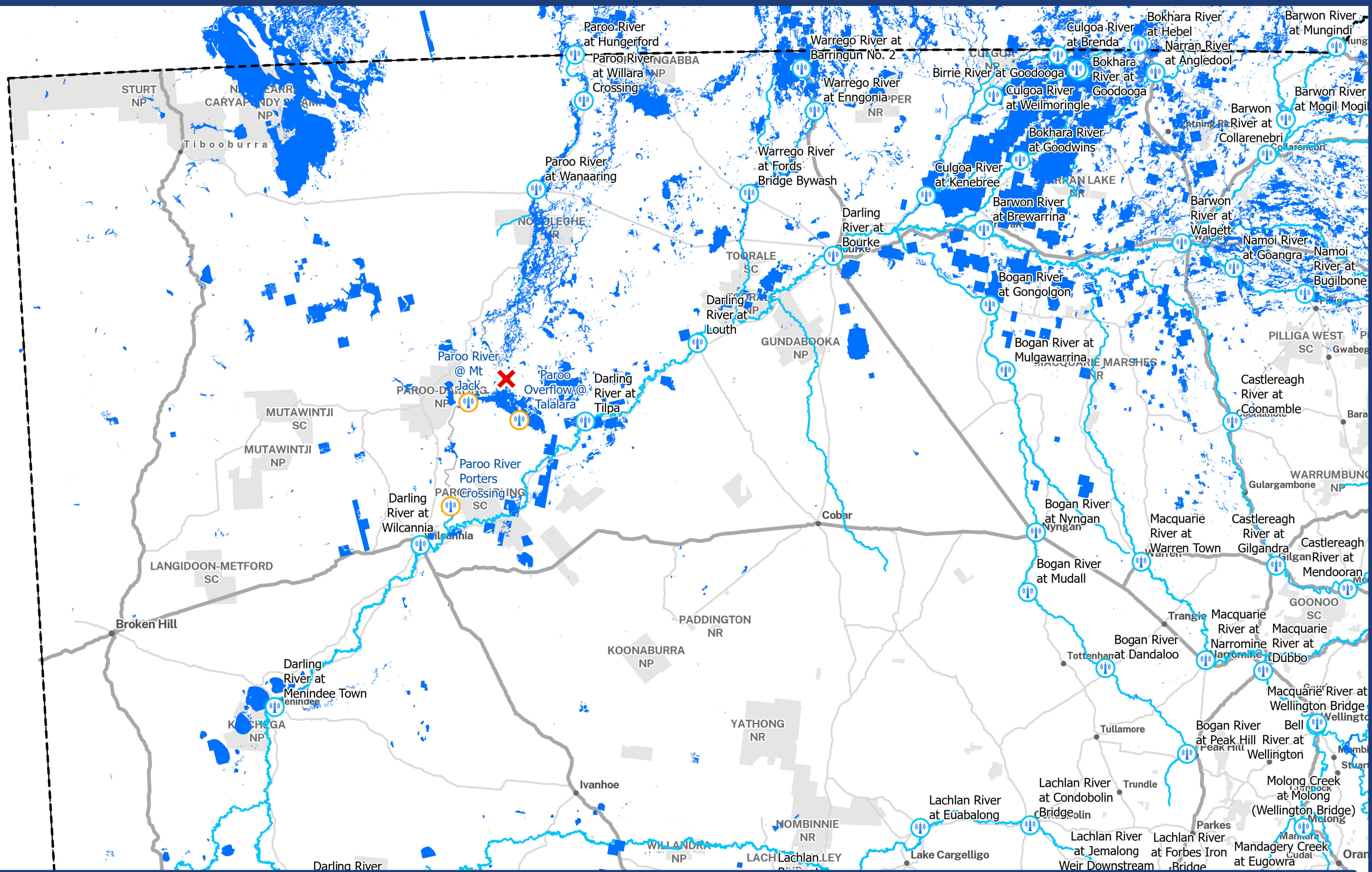


**Contact us**

For more information, please contact Western Zone via:

E: [wtz.ops@ses.nsw.gov.au](mailto:wtz.ops@ses.nsw.gov.au)  
W: [www.ses.nsw.gov.au](http://www.ses.nsw.gov.au)





ICEYE Flood Rapid Impact (Development) 24/04/2025  
Map - 27 APRIL 2025 09:00am

- BOM River Gauge
- Water NSW Temp Gauge

- Headwater Coordinate 26/04/25
- Paroo Head to Wilcannia

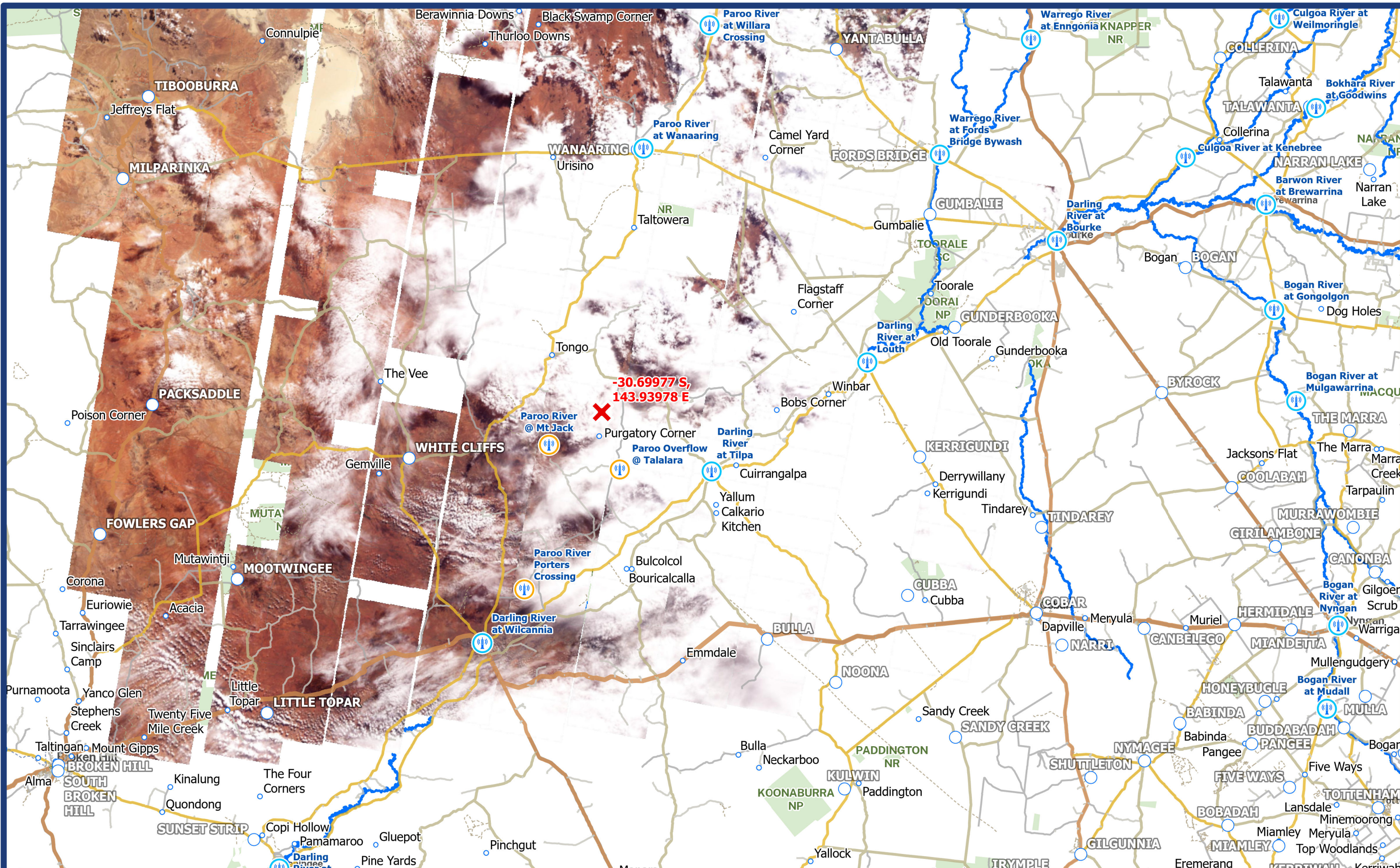
- Wanaaring to Paroo Head
- FRI (Dev) 24 April 2025



The ICEYE data on the maps is a product in development and is raw unchecked data where water has been detected on the ground. © ICEYE 2025

Projection: GDA 1994 NSW Lambert  
Date Saved: 27/04/2025





Legend

	BOM River Gauges		Water NSW Temp Gauge		Headwater Coordinate
--	------------------	--	----------------------	--	----------------------

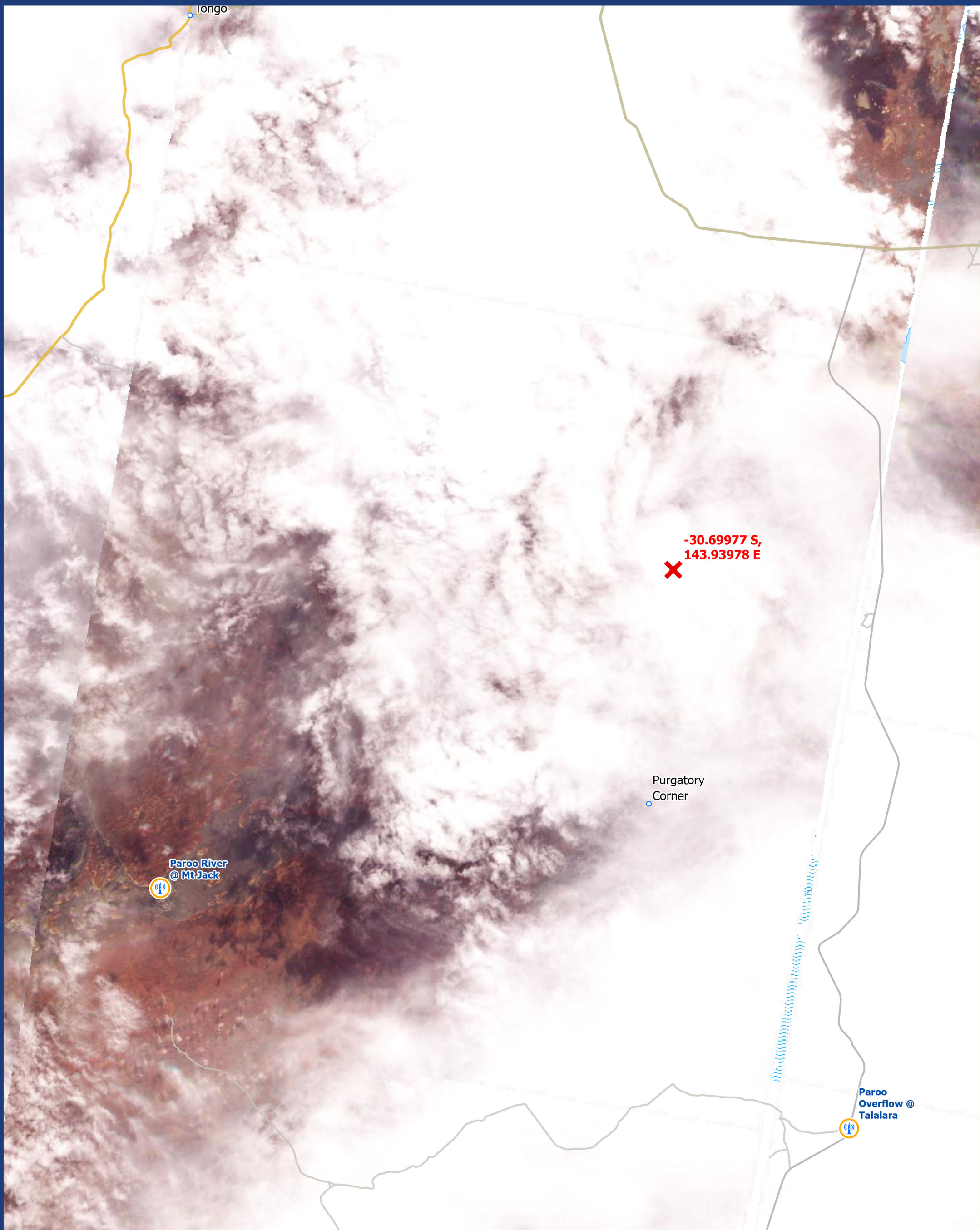
Western Zone Overview  
PLANET & MODIS Image Date: 26 APRIL 2025  
Map: 27 APRIL 2025 09:00am  
\*\* Headwater coordinates are from 26/04 due to cloud cover\*\*

Disclaimer  
Imagery: Image © 2025 Planet Labs PBC

0 25 50  
Kilometres

Projection: GDA 1994 NSW Lambert  
Date Saved: 27/04/2025







Start 04/04/2025

Total distance Wanaaring to Wilcannia: 222km

Travelled to 26/04/2025: 112 km

Remaining: 110 km

Current rate: Approx 3 km per day

**\*\*Headwater Coordinates are from 26/04 due to cloud cover\*\***

