

Wednesday 14th May 2025

Darling Basin Landholders Community Meeting





Agenda



1. Welcome
2. NSW SES
3. AASFA
4. Water NSW
5. NSW Reconstruction Authority
6. Summary
7. Q&A



Current Situation

Paroo River

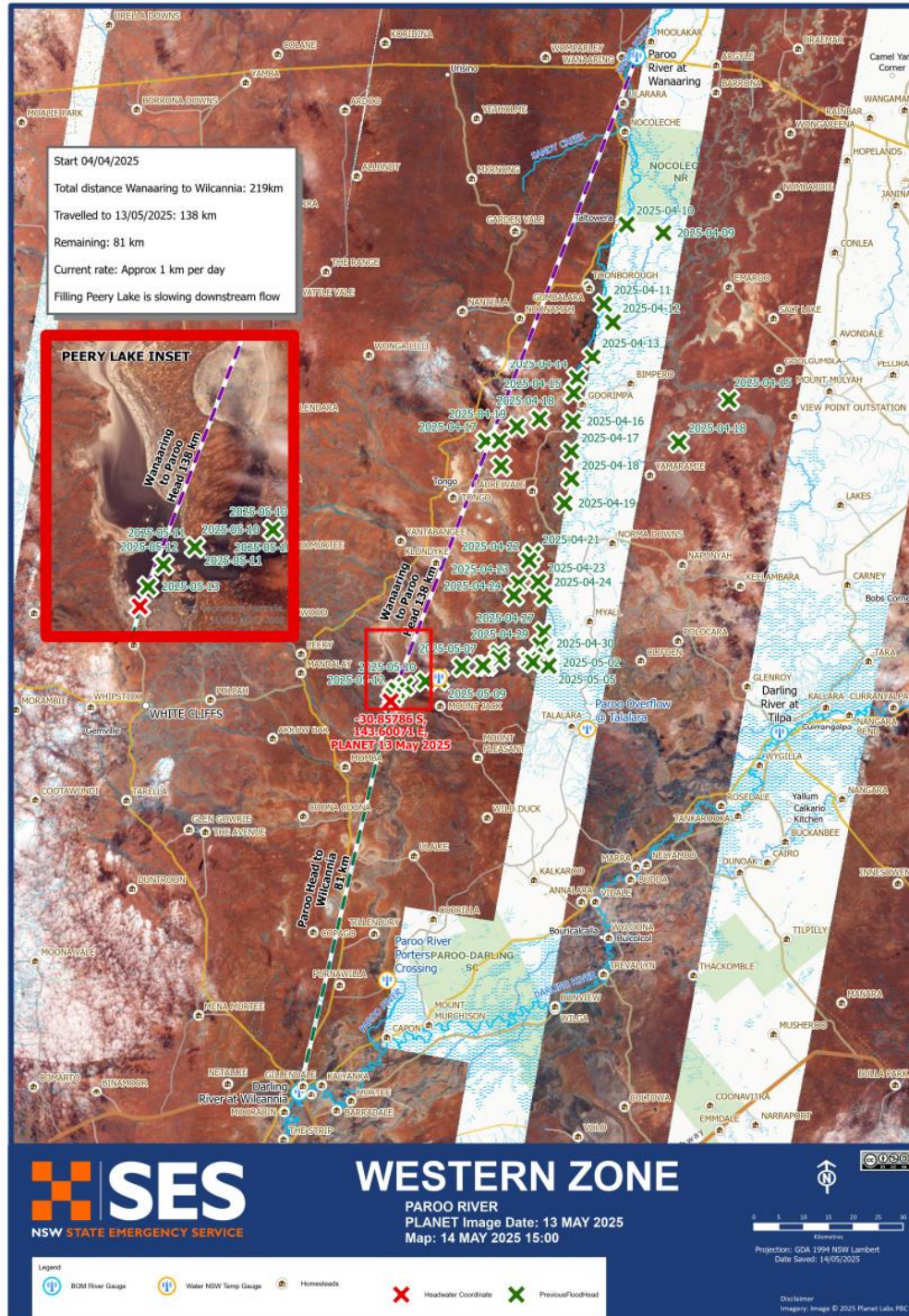
- Flood waters have slowed considerably and have reached (and surpassed) the temporary gauge established by WaterNSW at Mt. Jack.
- Water is now filling Peery Lake and has moved a further approx. 5kms south of lake.
- At current rate of >1.5kms per day, Paroo waters may not reach Darling River until mid to late June.

Kulkyne Creek & Cuttaburra Channel (and Cuttaburra Creek)

- Water from Kulkyne Creek reached and mixed with water from the Cuttaburra Channel.
- Water in the Cuttaburra Creek has reached approx. 30km south west of Utah Lake (between View Point Outstation and Tindy Woolshed).
- Water in the Cuttaburra Channel has reached approx. 15km north of the Tilpa-Tonga Road.



Paroo







Current Situation



Warrego River

- Fords Bridge
 - Bywash: Currently **1.84m (minor)** and falling. May fall below minor over the next few days.
 - Main Channel: Similar trend. Currently **0.84m** and falling.
- Dicks Dam is currently 1.434 with discharge reduced from 2736ML/d on 07/05/2025 to **1361ML/d current.**



06/05/2025 to 15/05/2025

2025

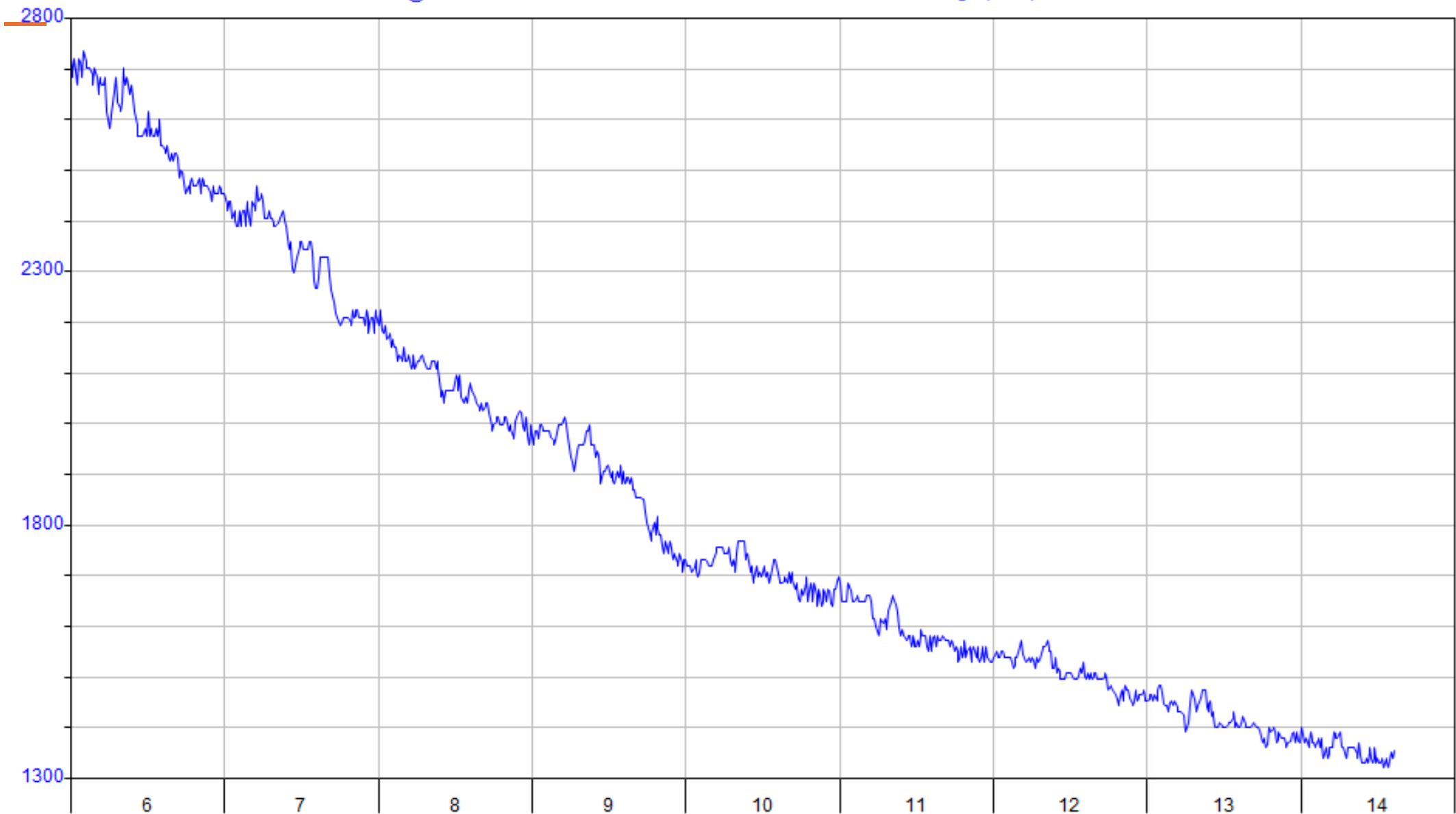
— 423007

WARREGO @ DICKS DAM

141.00

Discharge (ML/d)

CP





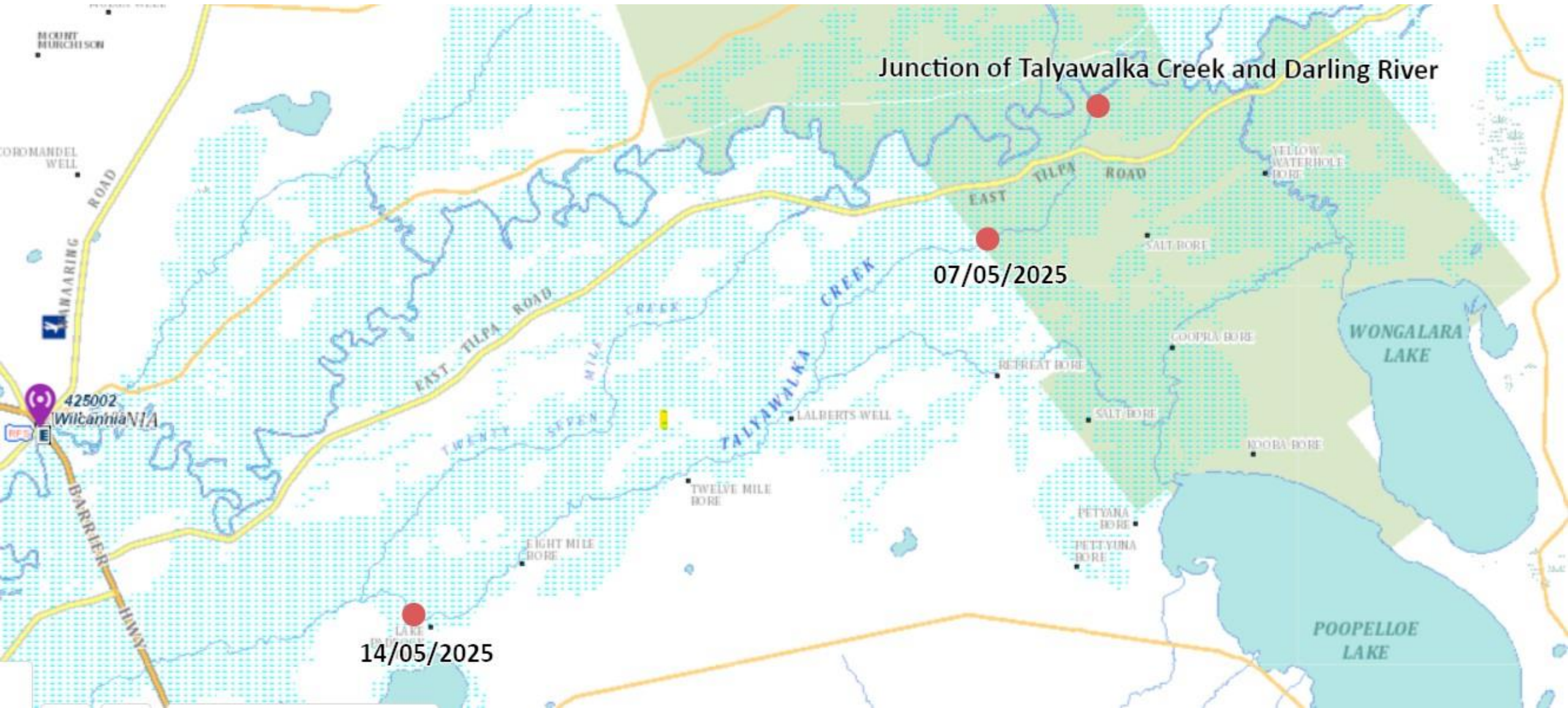
Current Situation



Talyawalka Creek

- Is flowing however water has still **not yet reached the gauge located on the Barrier HWY.**
- Intelligence has been gathered since Talawalka started to run (initially on Wednesday 30/04/2025).

Talyawalka Creek



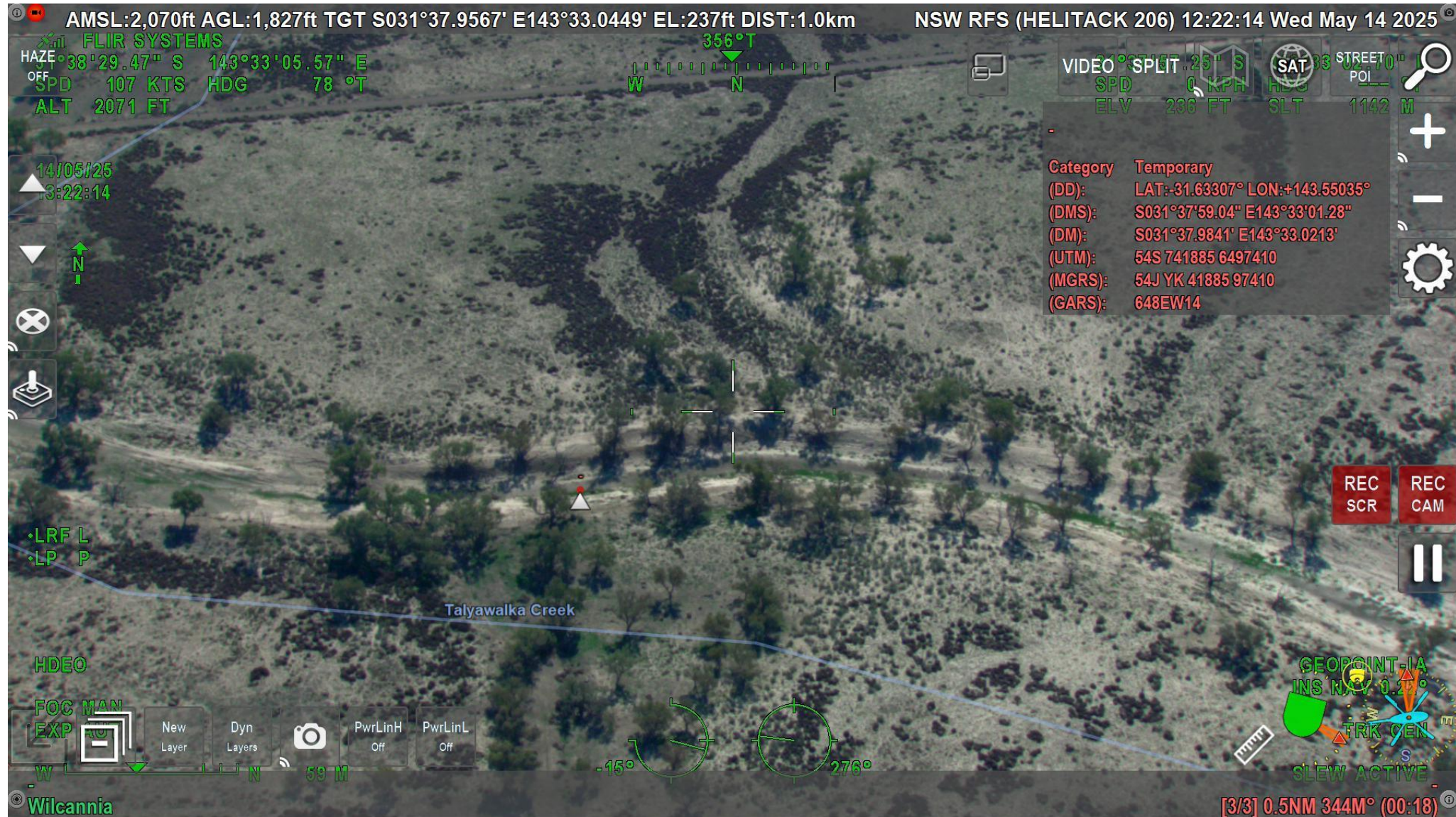
Talyawalka Creek – Recon Flight 14/05/2025



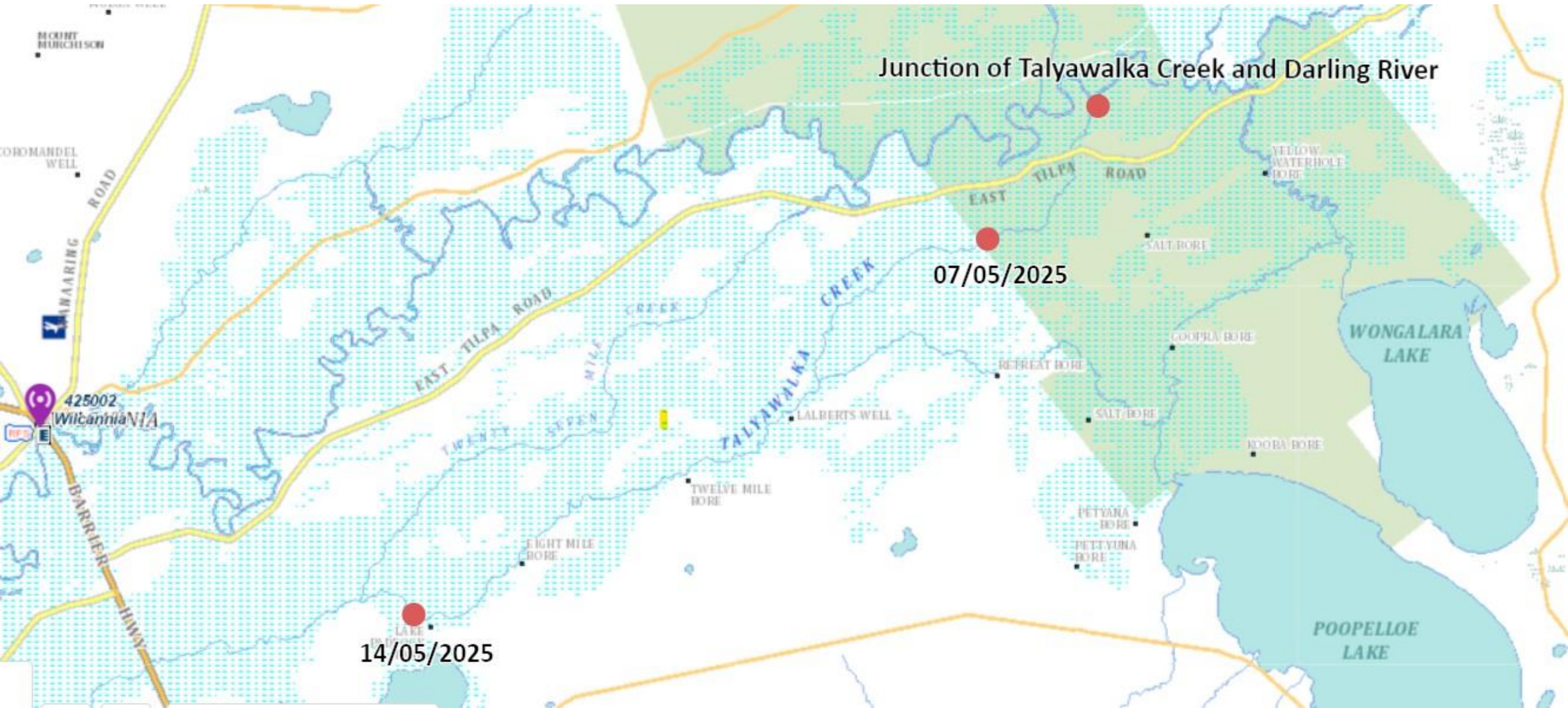
Talyawalka Creek – Recon Flight 14/05/2025



Talyawalka Creek – Recon Flight 14/05/2025



Talyawalka Creek



Talyawalka Creek – 14/05





Current Situation



Darling River

- **Tilpa:**
 - Currently **10.44m** (minor) and falling slowly.
 - Tilpa peaked at 10.68m (minor) on the 11/05/2025.
- **Wilcannia:**
 - Currently **9.18m** (minor) and rising slowly.
 - Likely to reach **9.40m** (minor) between **18/05/2025 to 20/05/2025**.
 - **Note:** BOM Warning today downgraded warning from **9.50m** to **9.40m**.
 - Minor flooding expected.

BOM predictions updated TODAY 14/05/2025 – 1.21pm

Flood Classifications

- below minor
- minor
- moderate
- major

WILCANNIA FLOOD GAUGE

FLOOD INFORMATION



NSW STATE EMERGENCY SERVICE

In an emergency
call the SES on **132 500**



12.00m

Levee height.

The levees protect Waralli Estate and St Theresa's Mission School.

11.75m

At this height, there may be a need to temporarily relocate residents of the Waralli Estate and St Theresa's Mission School into Wilcannia.

11.59m

Apr 1976

FLOOD OF RECORD

In 1976 many properties were isolated for 6 to 8 months due to flood waters and road damage.

11.13m

Aug 1956

10.00m

Apr 1955

Wilcannia - Menindee Rd (MR68A) closes 10km south west of "The Strip" and 20km south west near "Culpaulin". All road traffic Wilcannia - Menindee via Broken Hill.

10.03m

Flood waters cover the grounds of the Victory Caravan Park.

9.93m

July 2022

9.75m

Victory Caravan Park closes.
West Tilpa Rd (MR68) closes at First Creek.
"Kalyanka" and "Atley" are isolated.

9.70m

MODERATE FLOOD HEIGHT

Nov 1978

9.49m

Nov 2016

9.42m

May 2021

9.45m

West Tilpa Road (MR68) closes at Mara Creek.
"Rosedale", "Marra" and "Atley" lose evacuation route to Wilcannia.

9.25m

10 Mile Creek Road (SR10) closed 10 miles south of intersection of Barrier Highway.

9.00m

MINOR FLOOD HEIGHT

East Tilpa Road (SR1) closed to all vehicles.



CENTRAL DARLING
SHIRE COUNCIL



Predictions & Observed Heights

SITE	PREDICTED HEIGHT	PEAK HEIGHT	PEAK FLOW	PEAK DATE
Bourke	10.80m (final prediction)	10.64m	39745	30/04/2025
Louth	10.30m (final prediction)	10.28m	23748	07/05/2025
Tilpa	10.80m (final prediction)	10.68m	25262	11/05/2025
Wilcannia	9.40m*			
Menindee	<i>No flooding predicted.</i>	-	-	-

* *Downgraded to 9.40m from 9.50m in latest warning.*

■ What NSW SES Has Done *(Last 7 Days)*

- Continued to maintain sectors in Wilcannia and Bourke.
- Continued to undertake intelligence runs.
- Continued to use aviation and satellite imagery to track headwaters and identify where flooding is occurring .
- Continued to participate in Region and Local Emergency management briefings and meetings. There are now reduced.



■ What NSW SES Is Doing

(Next 7 Days)

- Continue to support isolated properties with resupply operations.
- Continue to actively and physically monitor Darling River & Talyawalka Creek.
- Continue to gather local intelligence from local landholders.
- Continue working with AASFA, Water NSW, NPWS, Reconstruction Authority and local councils.
- Continue regular briefings and media updates.
- Continue Darling Summary and provision of mapping.
- Community meeting in Menindee 2pm FRIDAY.



Menindee Community Mtg

NSW SES will be hosting a community meeting in Menindee:

- 2pm
- Friday 16/05/2025
- Town Hall

Water NSW and NSW SES will present and be available for question / concerns from residents regarding waters approaching Menindee from upstream.

All community members welcome.



Menindee Lakes System

Forecast and Operations

Jonathan Belej, Kristen Carter
Manager Water Planning and Delivery – South

14th May 2025



Mendinee Lakes Inflow Forecast & Operations 14 May 2025

- Peak flow in Darling has passed Tilpa and currently assessed as reaching Wilcannia over the next 7 days and reaching Menindee **Late May**.
- Current flow in Darling at Wilcannia is 25GL/d and increasing very slowly.
- Latest assessment completed 14 May 2025 estimates a further 275 - 675GL of inflow may reach the Menindee Lakes to the end of June 2025.
- From early April around 525GL has passed Wilcannia and flowed towards the Menindee Lake System.
- Menindee Lakes System currently holding ~884GL (51%) total volume, with 847GL airspace available (to Full Supply Level)
- Flood operations have not been required from this event, meaning no additional releases from storages other than minimum flow requirements and / or orders have occurred.
- Looking forward all accessible water arriving at the MLS will be captured as storage / future resource.

Mendinee Lakes Inflow Forecast & Operations 14 May 2025

- Releases from MLS (Lake Wetherell) to Lower Darling continue to reduce at increments of 250ML/d and currently 1,750ML/d.
- Release will continue to reduce until reaching 400ML/d to meet environmental demand and minimum flow requirements.
- Release from Lake Cawndilla to GDA will cease from tomorrow (15th May) as MDBA and Environmental orders have been finalised.
- Currently transferring ~12GL/d from upper lakes to Lake Menindee (may increase as higher flows arrive) and Pamamaroo inlet regulator is currently passing ~20GL/d.
- Continue to monitor and assess any potential gains from Paroo flows. No gains expected from Talyawalka Creek.
- WaterNSW to issue MLS forecast update in next 24hour period.

AASFA

Simon Oliver





Preparedness

- take proactive measures while you can, to minimise loss/impacts
- prepare livestock – move stock to higher ground, relocate to a less flood prone area
- have fodder on hand for isolated stock
- have a plan to check on and feed your stock
- secure chemicals, fuels and move machinery/pumps etc to higher ground.

Thanks to landholders for their efforts to date.



AASFA in action – aerial fodder drop and aerial surveillance of stock.



Support

AASFA Hotline 1800 814 647 (Monday – Friday, 9 am – 5 pm)

Support services available

- animal assessment and veterinary assistance
- euthanasia of animals on welfare grounds
- emergency fodder (where there is an immediate animal welfare concern)
- livestock feeding and management advice
- aerial support for livestock
- advise of absentee landholder (stock).

When floodwaters recede, report damage via the online Primary Industries Natural Disaster Damage Assessment (PINDDA): www.dpi.nsw.gov.au/damage

NSW Reconstruction Authority



NSW Reconstruction Authority Update 14th May 2025

Current Status –

Natural Disaster Declarations –

- Walgett
- Brewarrina
- Bourke
- Central Darling (Pending)



Types of funding assistance

- **Category A**
 - Includes emergency assistance
 - Emergency food, clothing, accommodation, repair/replace essential items
- **Category B**
 - Includes restoration of essential public assets – (such as roads , bridges, culverts etc), Counter Disaster operations such as installing temporary levees, sandbags etc. Primary producers and small businesses.

Primary producers and small businesses

- Concessional loans up to \$130,000
- Transport subsidies up to \$15,000



Where to go for assistance

NSW Government – Disaster Assistance Finder

<https://disasterassistance.service.nsw.gov.au>

Primary industries natural disaster damage assessment (PiNDDA)

This source of “ground truth” information helps the Government and communities understand the scale and regional distribution of the impact of a disaster on agriculture and target resources and assistance in an area.

<https://forms.bfs.dpi.nsw.gov.au/forms/18403>

<https://www.ruralaid.org.au/services-provided/financial-assistance>



Q&A



Thank You

