

Wednesday 7th May 2025

# Darling Basin Landholders Community Meeting





# Agenda



1. Welcome
2. NSW SES
3. AASFA
4. Water NSW
5. NSW Reconstruction Authority
6. Summary
7. Q&A



# Current Situation

## Paroo River

- **Flooding no longer occurring** at Willara Crossing and Wanaaring.
- Flood waters have slowed considerably and are still 5-10kms (min) away from the new manual gauges.
- Flood waters still 70-90kms from Darling River.

## Warrego River

Flooding is no longer occurring at Enngonia and manual reads will no longer be provided at that location.

- Fords Bridge
  - Bywash: Currently **2.54m (moderate)** and falling.
  - Main Channel: Similar trend. Currently 1.65m and falling.

## Talyawalka Creek

- Is flowing however water has **not yet reached Barrier Hwy gauge.**



# Current Situation *cont'*

## Darling River

- **Bourke:**

- Fell below (minor) 02.15am 06/06/2026 CURRENTLY **8.59m** (below minor) and falling.
- No further flooding expected.
- Has been removed from the BOM flood warning.

- **Louth:**

- Peak is currently at **Louth**.
- Currently **10.27m** (moderate) and slowly rising.
- May reach **10.30m** (moderate) from **Wednesday (today) 7/05/2025.**

**BOM predictions updated TODAY 07/05/2025 – 1.46pm**

**Flood Classifications**

- below minor
- minor
- moderate
- major





# Current Situation *cont'*

## Darling River

- **Tilpa:**

- Currently **10.26m** (minor) and rising slowly.
- Likely to **exceed moderate** (10.50m) late Thursday into Friday.
- May reach **11.00m** (moderate) between **Saturday 10/05/2025** to Saturday 17/05/2025.

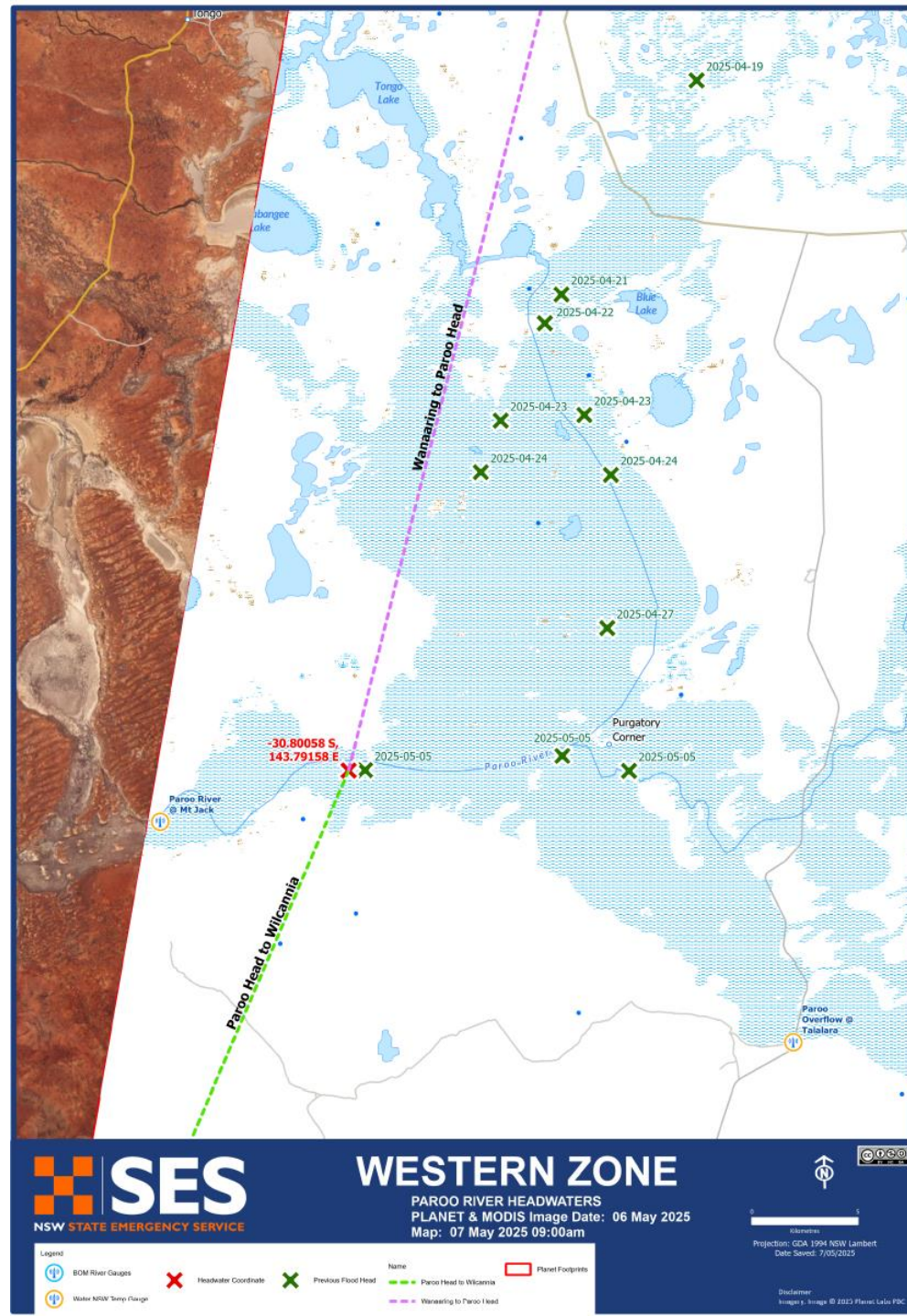
- **Wilcannia:**

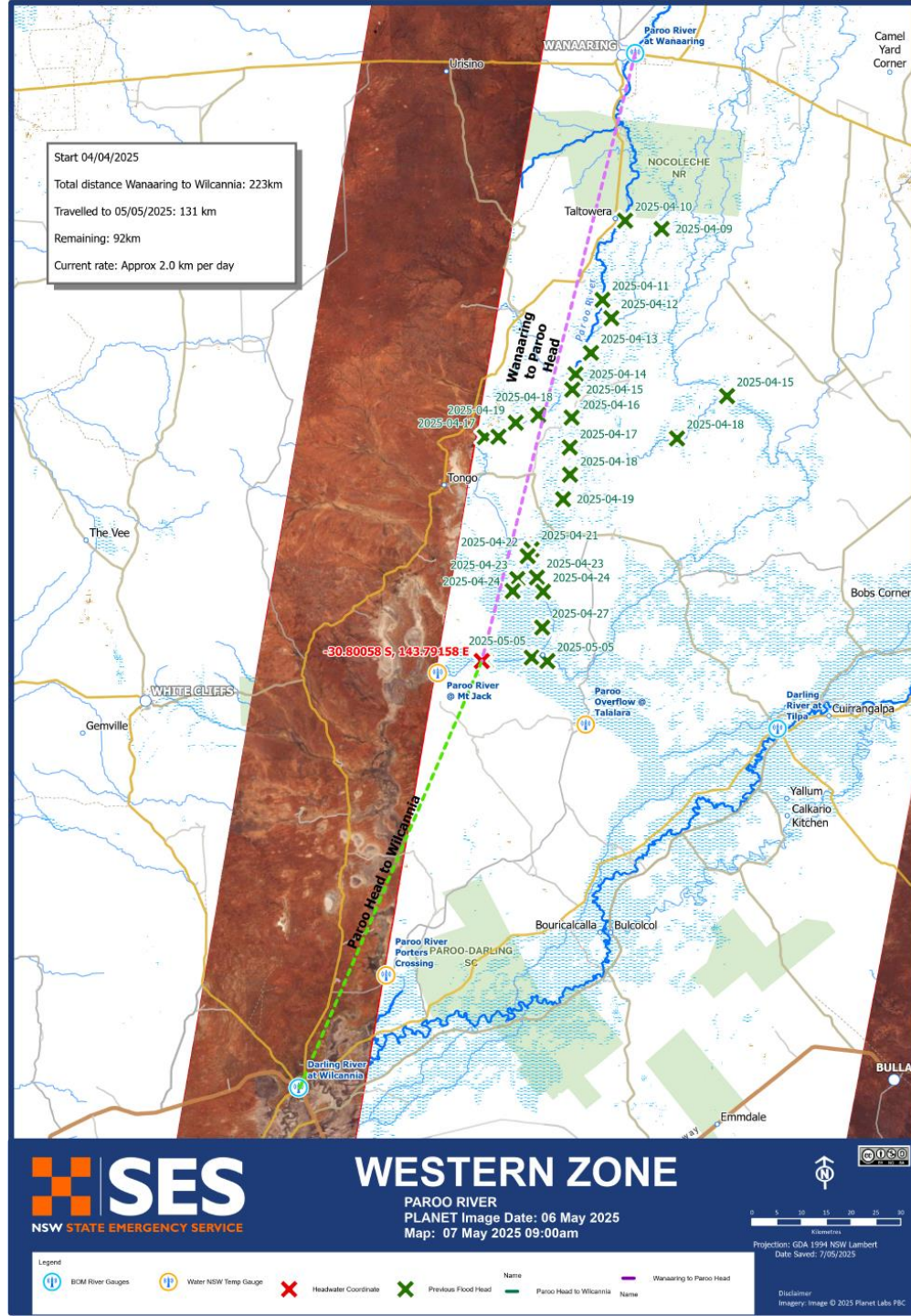
- Currently **8.63m** (below minor) and slowly rising.
- Likely to reach **9.00m** (minor) between **Sunday 11/05/2025 to Tuesday 13/05/2025**. Moderate flooding possible.
- *Higher levels, including moderate flooding are possible. Predictions will be refined as upstream peaks are observed.*

**BOM predictions updated TODAY 07/05/2025 – 1.46pm**

Flood Classifications	
●	below minor
●	minor
●	moderate
●	major

# Paroo River







# Wilcannia Bridge 07/05/2025







AMSL:3,743ft AGL:3,486ft TGT S031°27.5097' E143°50.0289' EL:257ft DIST:2.5km

NSW RFS (HELITACK 206) 14:47:15 Wed May 07 2025

FLIR SYSTEMS

273°T

HAZE DAY  
SPD 123 KTS HDG 61 °T  
ALT 3744 FT

VIDEO SPLIT  
SPD 0 KPH  
ELV 256 FT

TOPO2  
SLT 2750 M

07/05/25  
15:47:15

Coach And Horses Campground Road

Darling River

Wilcannia-Bourke Road

Talyawalka Creek

•LRF L  
•LP P

HDEO

FOC MAN  
EXP

Wilcannia-Bourke Road / Coach And Horses Campground Road  
Far Northwest New South Wales-Wilcannia NSW

Wilcannia-Bourke Road  
[10/10] 2.3NM 223M° (01:09)

# Tallyawalka Creek Head







AMSL:2,969ft AGL:2,711ft TGT S031°29.1272' E143°49.3006' EL:247ft DIST:5.4km

NSW RFS (HELITACK 206) 13:29:41 Wed May 07 2025

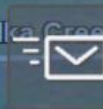
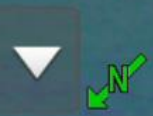
FLIR SYSTEMS  
HAZE OFF  
SPD 97 KTS HDG 300 °T  
ALT 2971

133°T  
E S

VIDEO SPLIT 97° S  
SPD 0 KPH  
ELV 249 FT  
TOPO29  
STREET 17.76  
SLT 5435 M

# Tallyawalka Creek Head

07/05/25  
14:29:42



REC SCR REC CAM



•LRF L  
•LP P

HDEO

FOC MAN  
EXP

New Layer Dyn Layers  
PwrLinH Off PwrLinL Off



Wilcannia-Bourke Road / Coach And Horses Campground Road  
Far Northwest New South Wales-Wilcannia NSW

Wilcannia-Bourke Road  
[4/4] 2.9NM 120M° (01:50)



# Predictions & Observed Heights



SITE	PREDICTED HEIGHT	PEAK HEIGHT	PEAK FLOW	PEAK DATE
Bourke	10.80m	10.64m	39745	29/04/2025
Louth	10.30m	Expected tonight		
Tilpa	11.00m			
Wilcannia	9.0m			
Menindee				



# ■ What NSW SES Has Done *(Last 7 Days)*

- Established a sector of operations at Wilcannia to support the community with additional volunteers and resources being moved into the area:
  - 9 volunteers.
  - 1 High Clearance Vehicle (HCV).
  - 2 4X4 vehicles.
  - 1 additional vessel (3 in location).
  - Mobile communications tower.
- NSW SES has continued to use aviation and satellite imagery to track headwaters and identify where flooding is occurring .



# ■ What NSW SES Has Done

## *(Last 7 Days cont...)*

- Supported isolated properties with resupply requests (Paroo and Warrego area).
- Continued to participate in Region and Local Emergency management briefings and meetings. There are now reduced.
- Provided consistent updates to media partners.





# ■ What NSW SES Is Doing

## *(Next 7 Days)*

- Continue to support isolated properties with resupply operations.
- Continue to actively and physically monitor Darling River & Talyawalka Creek.
- Continue to gather local intelligence from local landholders.
- Continue working with AASFA, Water NSW, NPWS, Reconstruction Authority and local councils.
- Continue working with NSW RFS on current operations in Louth, Tilpa and Wilcannia.
- Continue regular briefings and media updates.
- Continue Daily Darling Summary and provision of mapping.



# Menindee Lakes System

## Forecast and Operations

Jonathan Belej  
Manager Water Planning and Delivery – South

**7<sup>th</sup> May 2025**





# Mendinee Lakes Inflow Forecast & Operations 7 May 2025

- Latest assessment completed 7 May 2025 estimates a further 450 - 850GL of inflow may reach the Menindee Lakes to the end of June 2025.
- From early April around 350GL has passed Wilcannia and moved down to the MLS
- Menindee Lakes System currently holding ~760GL (44%) total volume, with 970GL airspace available (to Full Supply Level). Flood operations not required at this stage.
- Current flow in Darling at Wilcannia is 22GL/d and increasing
- Releases from MLS currently 3.8GL/d. Releases will be reduced over coming weeks as per MDBA's call on shared resource.
- Recession will be at rates of 250ML/d, target flow will be variable – subject to MDBA requirements, Environmental demand, Water quality management and / or meeting WSP minimum flow requirements.

# Mendinee Lakes Inflow Forecast & Operations 7 May 2025

- Continuing to release 0.7GL/d from Lake Cawndilla – operational and environmental delivery via GDA
- Currently transferring ~9.5GL/d from upper lakes to Lake Menindee (will increase as higher flows arrive)
- Gates at the Pamamaroo inlet regulator to be reinstated over coming day to regulated incoming flows between Lake Pamamaroo and Lake Wetherell.
- Peak flows in Darling at Louth is expected over coming days and currently assessed as reaching Wilcannia Mid-May and reaching Menindee Late May.
- Continue to monitor and assess any potential gains from Paroo flows. No gains expected from Talyawalka Creek but is being monitored.
- WaterNSW to issue MLS forecast update in next 24hour period



# Mendinee Lakes Inflow Forecast & Operations 7 May 2025

Water Monitoring teams completed installation of Talyawalka Flow Gauges. All new gauges are live and accessible on Waterinsights :

Quick links Talyawalka Creek Gauges

<https://waterinsights.watarnsw.com.au/12104-lower-darling-regulated-river/river-data>

<https://waterinsights.watarnsw.com.au/12104-lower-darling-regulated-river/river-data#425061>

<https://waterinsights.watarnsw.com.au/12104-lower-darling-regulated-river/river-data#425029>

Quick links Paroo River Gauges

<https://waterinsights.watarnsw.com.au/16001-barwon-darling-unregulated-river/updates>

<https://waterinsights.watarnsw.com.au/16001-barwon-darling-unregulated-river/river-data>

<https://waterinsights.watarnsw.com.au/16001-barwon-darling-unregulated-river/river-data#424003>

# AASFA

Simon Oliver







Preparing your property and your animals for flooding and isolation



# Preparedness

- Take proactive measures while you can, to minimise loss/impacts
- Prepare livestock – move stock to higher ground, relocate to a less flood prone area
- Have fodder on hand for isolated stock.
- Have a plan to check on and feed your stock.
- Secure chemicals, fuels and move machinery/pumps etc to higher ground.

AASFA – Western Floods

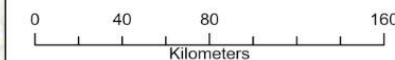
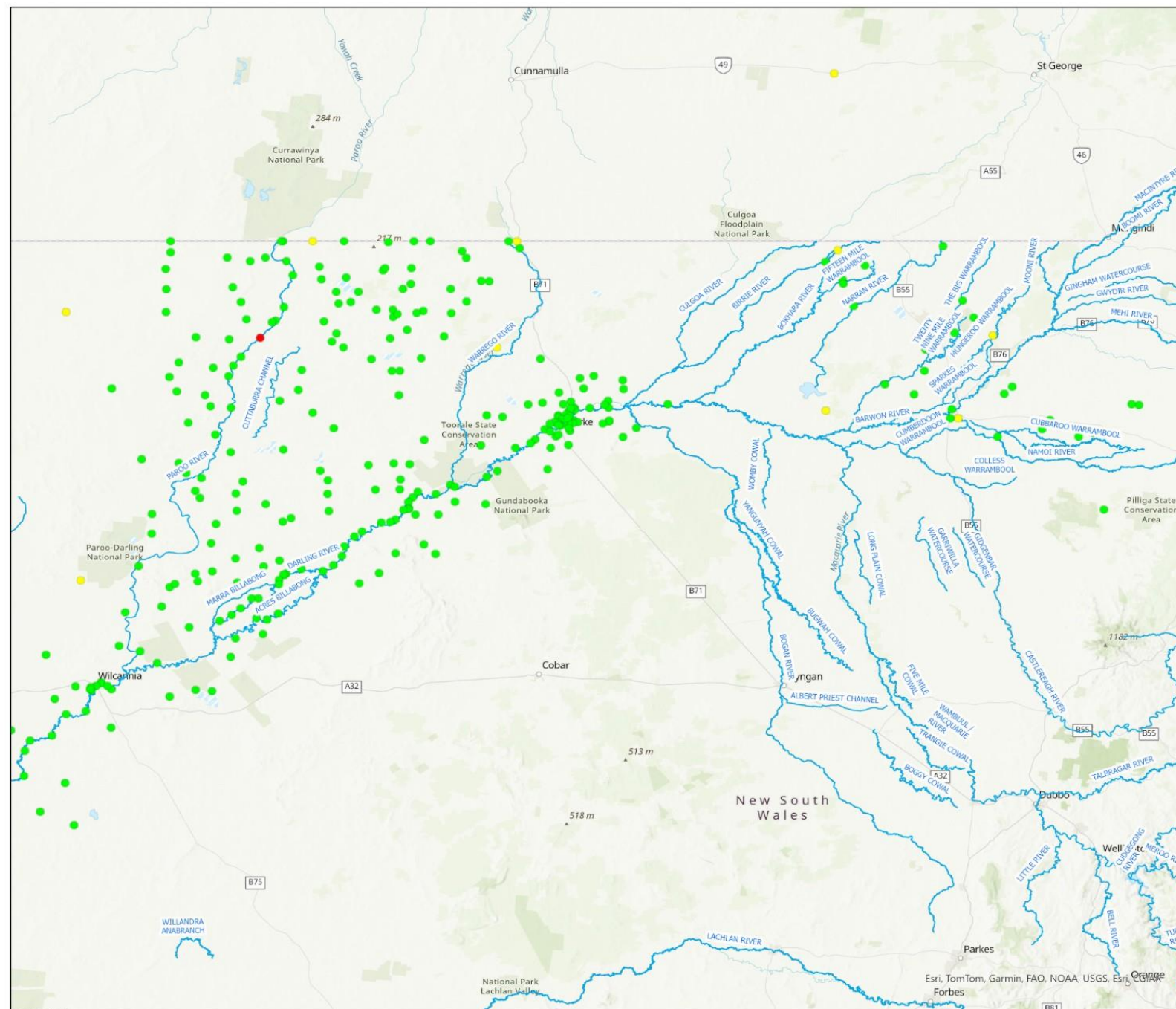
7 May 2025



## Western NSW Floods- Cases

### Cases

- Assistance Required (AR)
- No Further Action (NFA)
- Not Assessed (NA)
- Resolved Premises (RP)
- Surveillance Required (SR)
- Named Water Course



Date: 22/04/2025 1:40 PM

**Sources:** Data used may include  
NSW Land and Property Information - Towns, parks and forests,  
roads, water, imagery.  
NSW Dept of Industry - Administrative boundaries.  
Includes material © CNES 2009, Distribution Spot Image S.A.  
France, all rights reserved





Know who to call for support

# Support



AASFA Hotline 1800 814 647 (Monday - Friday 9am - 5pm)

## Support services available:

- Animal assessment and veterinary assistance
- Euthanasia of animals on welfare grounds
- Emergency fodder (where there is an immediate animal welfare concern)
- Livestock feeding and management advice
- When floodwaters recede – report damage via the online Primary Industries Natural Disaster Damage Assessment (PINDDA)
- Aerial support for livestock
- Advise of absentee landholder (stock)

AASFA – Western Floods

7 May 2025



# NSW Reconstruction Authority





# NSW Reconstruction Authority Update 7<sup>th</sup> May 2025



## Current Status –

### Natural Disaster Declarations –

- Walgett
- Brewarrina
- Bourke
- Central Darling (Pending)



# NSW Reconstruction Authority Update 7<sup>th</sup> May 2025

## Types of funding assistance

- **Category A**
  - Includes emergency assistance
  - Emergency food, clothing, accommodation, repair/replace essential items
- **Category B**
  - Includes restoration of essential public assets – (such as roads , bridges, culverts etc), Counter Disaster operations such as installing temporary levees, sandbags etc. Primary producers and small businesses.

### Primary producers and small businesses

- Concessional loans up to \$130,000
- Transport subsidies up to \$15,000





# NSW Reconstruction Authority Update 7<sup>th</sup> May 2025



## Where to go for assistance

NSW Government – Disaster Assistance Finder

<https://disasterassistance.service.nsw.gov.au>

## Primary industries natural disaster damage assessment (PiNDDA)

This source of “ground truth” information helps the Government and communities understand the scale and regional distribution of the impact of a disaster on agriculture and target resources and assistance in an area.

<https://forms.bfs.dpi.nsw.gov.au/forms/18403>

<https://www.ruralaid.org.au/services-provided/financial-assistance>





# Q&A





# Thank You

