

# LIVING IN THE WALLACIA FLOODPLAIN

**DO YOU KNOW YOUR FLOOD RISK?  
ARE YOU PREPARED FOR FLOODS?  
FIND OUT MORE AT [WWW.SES.NSW.GOV.AU](http://WWW.SES.NSW.GOV.AU)**

## FLOODS. THE RISK IS REAL.

The Hawkesbury-Nepean Valley covers a wide area in Western Sydney from Bents Basin near Wallacia to the Brooklyn Bridge. The valley has a long history of dangerous and deep flooding. This is because floodwaters flow into the valley more quickly than they can flow out, causing them to back up. Heavy rain caused by an East Coast Low can lead to severe flooding in just a few days.

The March 2021 flood was only the 15th largest recorded flood in the region - though the impacts were felt far and wide. Floodwater severely impacted over 600 homes, over 30 caravan parks, hundreds of farms, and transport routes and essential services such as electricity were cut. The estimated damage bill was several hundred million dollars.

Floodwaters are also dangerous - they can be deeper and faster flowing than they seem, and full of hazardous materials such as toxic chemicals, sewage, broken building materials, sharp branches and wildlife (including snakes).



View of flooded Silverdale Road Bridge, Wallacia, March 2021 flood. Source: Wallacia Rural Fire Brigade

## FLOODS CAN BE MUCH WORSE.

There have been much larger floods in the valley including the worst flood on record. In 1867, river levels reached 19.1 metres above normal river height at Windsor and the region was devastated. (See page 3 for flood comparisons.) If a similar flood happened now the consequences would be catastrophic - many lives would be at risk and almost 90,000 people would have to evacuate.

Floods are random, naturally occurring events. It's impossible to predict when the next major flood will happen. History has shown that serious floods can happen many times in a single decade, and not again for many years.



Wallacia flooding, August 1990. Source: Troy Howe

# WALLACIA FLOODPLAIN.



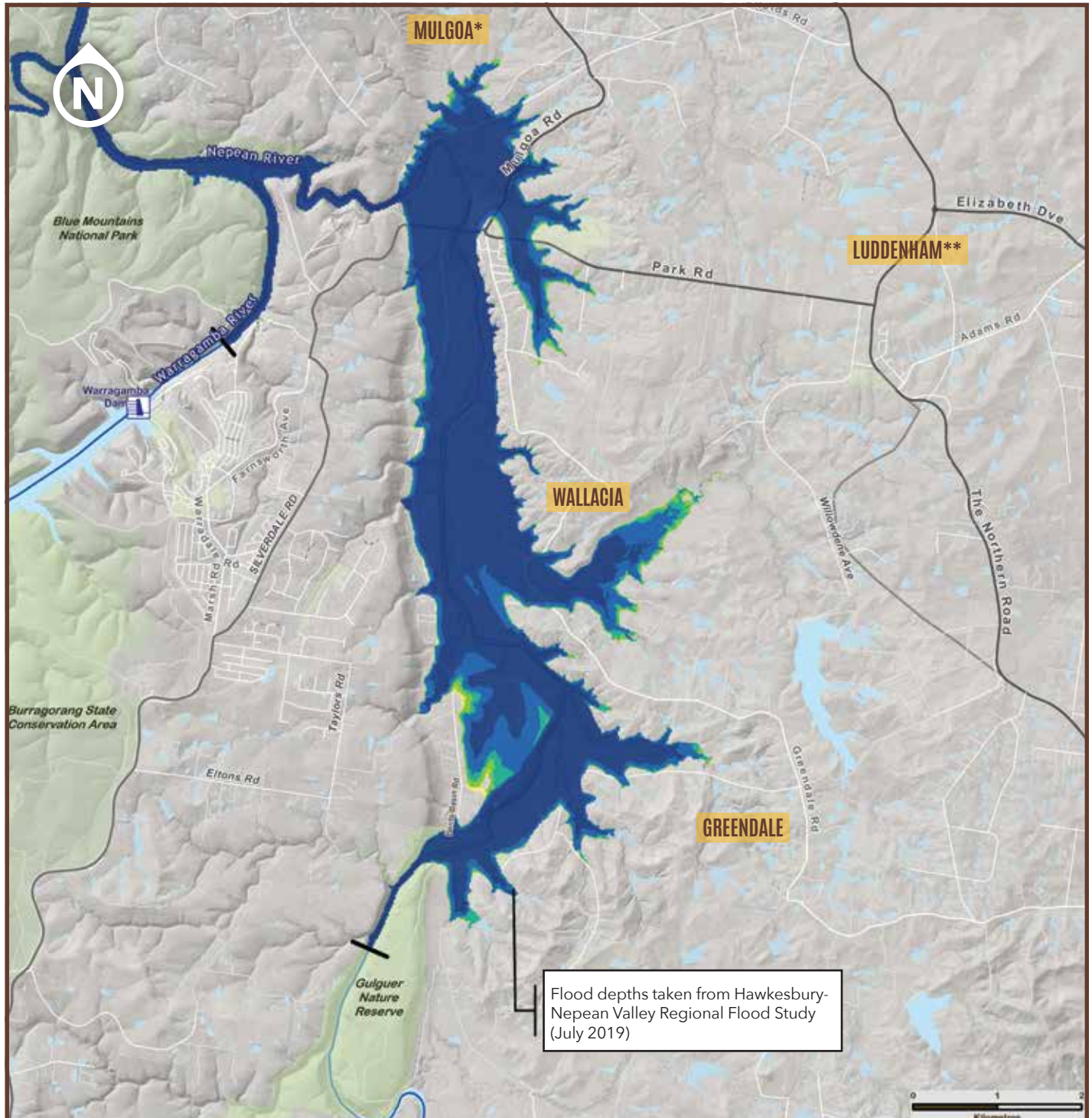
The map below highlights suburbs at greatest risk of flooding from the Nepean River.

The first step to being prepared for a flood is knowing your flood risk.

This map shows a flood that has a 1 in 500 (or a 0.2%) chance per year of happening.

This flood has a 15% chance of happening in an 80-year lifetime.

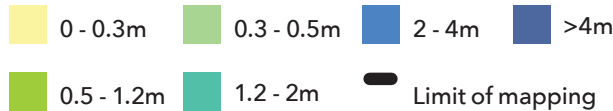
If your suburb isn't listed, you could still be at risk of flooding.



Flood depths taken from Hawkesbury-Nepean Valley Regional Flood Study (July 2019)

## MAP KEY

DEPTH OF FLOODING



\*A small proportion of properties in the suburb of Mulgoa are affected by flood from either the Penrith/Emu Plains floodplain or the Wallacia floodplain. No properties are directly affected in Mulgoa village.  
\*\* A small proportion of properties in the suburb of Luddenham are flooded in low likelihood floods.

Flood information source: Hawkesbury-Nepean Valley Regional Flood Study (WMAwater 2019, prepared for Infrastructure NSW). Further work is underway to assess complex flood behaviour in Wallacia.

The map shows flooding from the Hawkesbury- Nepean River system including backwater effects. It does not focus on local catchment or overland flooding - please contact your local council for this information.

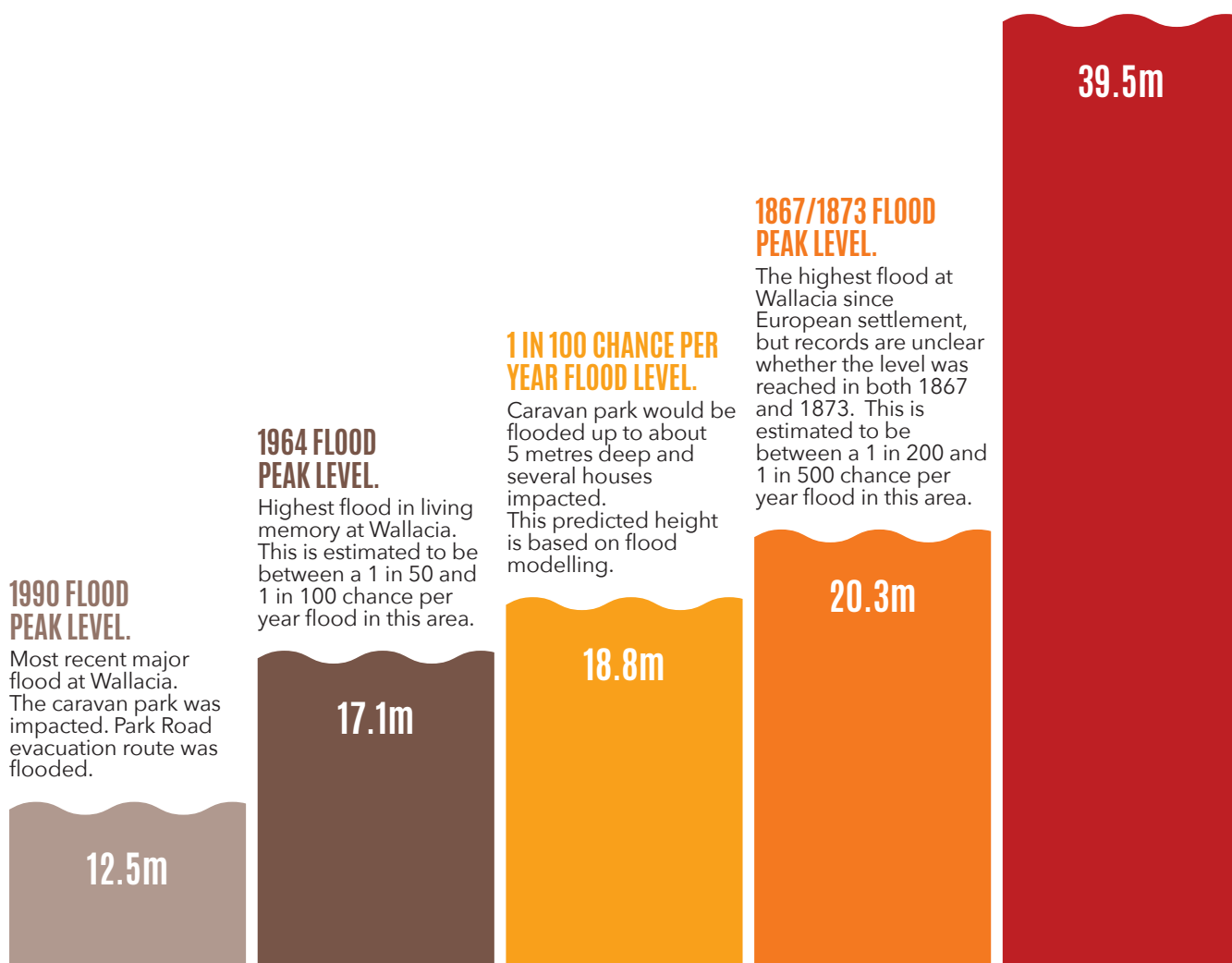
# YOUR LOCAL AREA: IN THE FLOOD ZONE.

Wallacia was originally called Riverview, as it sits alongside the Nepean River, with the swimming hole of Bents Basin to the south. A naturally occurring floodplain, the area is prone to flooding. The Wallacia floodplain has the potential for the deepest levels of flooding in the valley.

In a moderate flood, Silverdale Road would be cut at Blaxlands Crossing. In a larger flood, the Park Road evacuation route from Wallacia to the east would be cut. And in the worst possible flood, all major evacuation routes out of the area would be cut and the village of Wallacia would be inundated.

## PROBABLE MAXIMUM FLOOD LEVEL (PMF).

In this extremely rare event, flooding at Wallacia would rise to great depths. This is because the floodwaters coming from the Warragamba River and Nepean River catchments get backed up by the narrow gorges between Wallacia and Penrith. In the PMF, nearly the entire community of Wallacia would be flooded. This predicted height is based on flood modelling.



These heights are relative to the normal river height at Wallacia Weir. Normal river level is assumed to be 0.2m on the Wallacia Weir gauge.

The information contained in this publication is based on knowledge and understanding at the time of compilation (August 2021). However, because of advances in knowledge, users are reminded of the need to ensure that information upon which they rely is up to date. NSW State Emergency Service takes no responsibility for the accuracy, currency, reliability and correctness of any information in the map (including, without limitation, any of the information provided by third parties) nor for the accuracy, currency, reliability and correctness of links or references to information sources with regard to the map. While all reasonable care has been taken in the compilation, to the extent permitted by law, NSW State Emergency Service and the State of New South Wales and its employees and agents exclude all liability for the accuracy or completeness of the information, or for any injury, loss, or damage whatsoever (including without limitation liability for negligence and consequential losses) suffered by any person acting, or purporting to act in reliance upon anything contained herein.

# GET PREPARED IN THE WALLACIA FLOODPLAIN

THESE SIMPLE ACTIONS WILL HELP PREPARE YOUR HOUSEHOLD FOR FLOODS.

BEING PREPARED CAN SAVE LIVES.

## How to prepare for flood

### ✓ Know where to get updates and warnings

- Bureau of Meteorology: local weather updates: Visit [www.bom.gov.au](http://www.bom.gov.au) or download the BOM app
- NSW State Emergency Service (NSW SES): information on floods and storms Visit [www.ses.nsw.gov.au](http://www.ses.nsw.gov.au) and on social media including Facebook - [www.facebook.com/NSW.SES](https://www.facebook.com/NSW.SES)
- ABC Radio: the official emergency broadcaster Listen at [reception.abc.net.au](http://reception.abc.net.au) and ABC Listen app

### ✓ Prepare a Get Ready to Go kit

#### What to pack:

1. Health care items like medications and prescriptions
2. Copies of your important documents (hard copies or stored digitally)
3. Important valuables and momentos
4. Important phone numbers
5. Battery powered radio and torch
6. Clothing and personal items

### ✓ Make a plan for evacuation

Know where you will go, how you will get there, what evacuation routes you can use, what you will do with your animals, and how you will manage your health

Visit [www.ses.nsw.gov.au/yourfloodplan](http://www.ses.nsw.gov.au/yourfloodplan) for more information and tips. Find how to plan for your animals here - [www.getreadyanimals.nsw.gov.au](http://www.getreadyanimals.nsw.gov.au)

### ✓ Share your plan

Talk with your relatives, friends, and neighbours about what you will do if you need to evacuate

## What to do during a flood



### Follow NSW SES Flood Advice and Emergency Warnings

- Listen to your local ABC radio station for up to date flood information and advice
- Follow advice from NSW SES if you are asked to evacuate, don't wait until it is too late



### Take your emergency bag

- This should include your medications, prescriptions and any assistance equipment



### Take your animals

- Put them on leads or in pet carriers



### Know where to go

- Follow advice on evacuations and check live traffic information. Visit [www.ses.nsw.gov.au](http://www.ses.nsw.gov.au) and [www.livetraffic.com](http://www.livetraffic.com) or the Live Traffic app



### Look out for each other

- Share information with family, friends, and neighbours and help each other or those who may need assistance

## Key contact information



[www.ses.nsw.gov.au](http://www.ses.nsw.gov.au)



**138 737** for general enquiries



**132 500** for emergency assistance during a flood

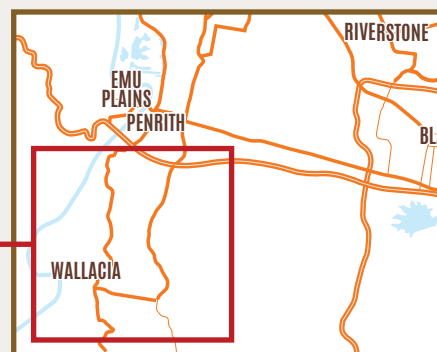
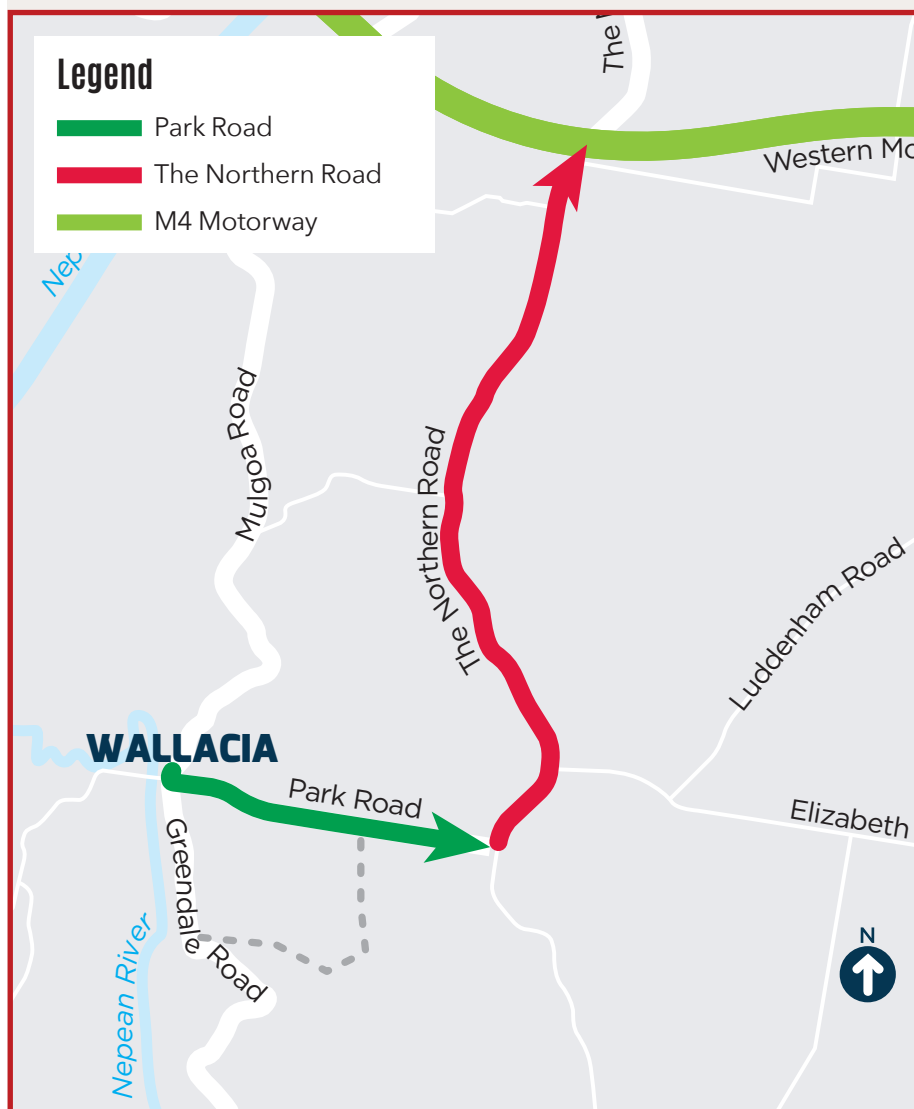


**000** for life threatening emergencies

# Your local evacuation routes

Your local routes are *Park Road* and *The Northern Road*.

Know that routes can get cut during a flood. Always check with traffic updates.



## FLOOD FORECASTS AND DECISIONS ABOUT EVACUATING

The Bureau of Meteorology (BOM) predicts flood heights for the Hawkesbury-Nepean River at river height gauges located along the river.

Using these predictions, the NSW State Emergency Service (SES) makes decisions about the need to issue flood evacuation warnings and orders to keep communities safe.

During a flood you need to respond to evacuation advice. If you do not, you risk getting trapped and being unable to leave safely.

The main river height gauge in your floodplain is Nepean River at Wallacia Weir and information is automatically updated on the **BOM's website**.

## Need help?



For emergency help in floods call NSW SES on 132 500

In life threatening emergencies call Police/Ambulance on 000

- Hearing/speech impaired SMS NRS: 0423 677 767
- Internet Relay: <https://internet-relay.nrsccall.gov.au>
- If you are homeless call **Link2Home** on 1800 152 152