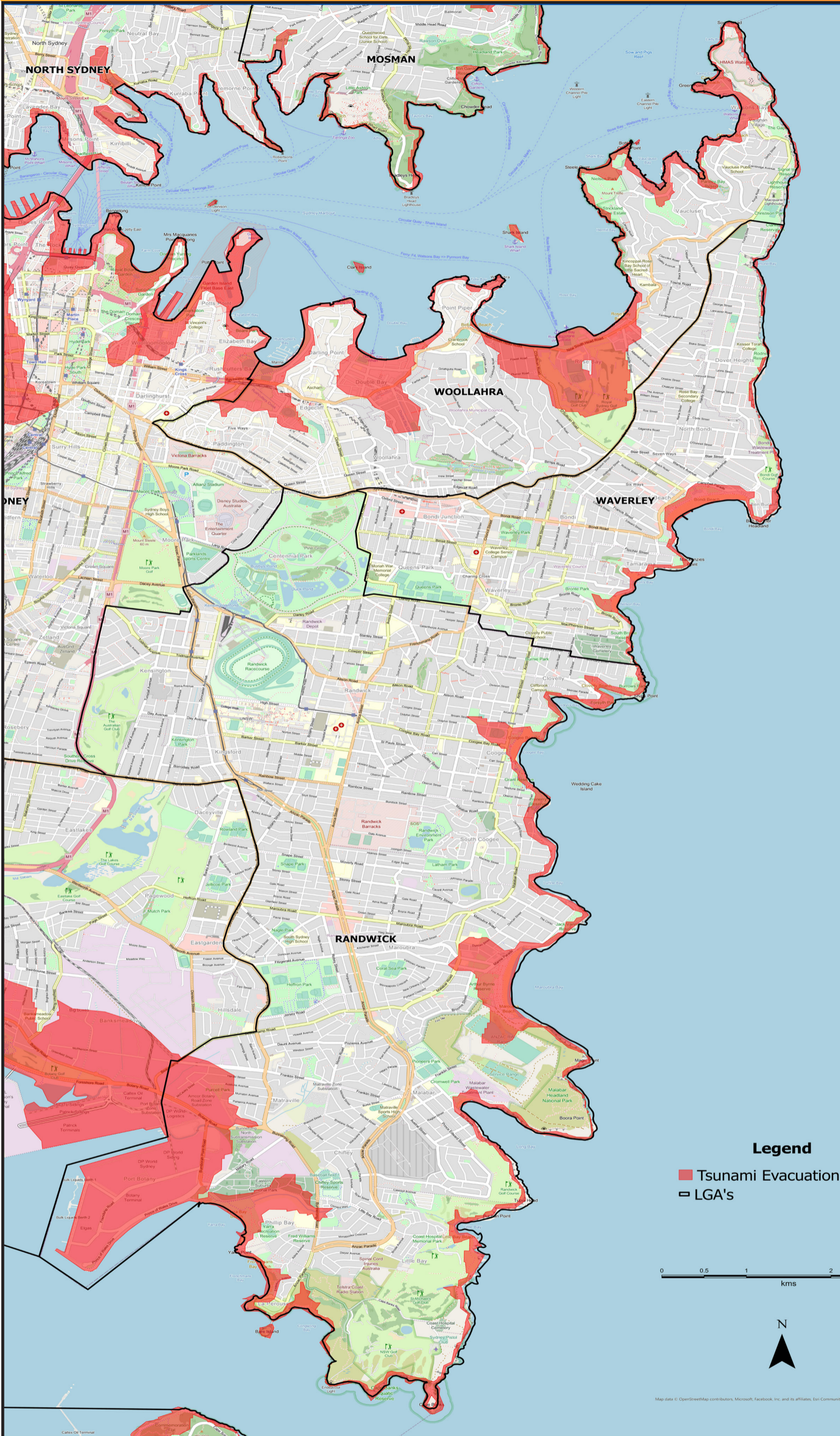


# Sydney Eastern Beaches Tsunami Evacuation Areas



## KEY:

 **Tsunami Evacuation Areas**

## KNOW YOUR RISK

### Are you at risk?

The areas identified on the map can be significantly affected by tsunami. It is important to be prepared. Always prioritise life over property damage by leaving the area as soon as a Tsunami Warning is issued. This brochure contains information on the areas requiring evacuation in your local area for a land inundation threat. It can help you prepare for a tsunami. It does not contain information on assembly areas.

 **Act early on the first warning you hear**

**Disclaimer:** NSW SES tsunami safety advice states people go to higher ground, at least 10m above sea level, or if possible move at least 1km away from all beaches and the water's edge of harbours and coastal estuaries. The evacuation areas depicted in this map extend 10km up estuaries. They do not depict inundation areas. These broad evacuation areas will be used by the NSW SES for tsunami response planning in the event of a land threat tsunami, and may change depending on the size of the tsunami forecast. They are conservative and based on the best information available at the time. Online maps ([ses.nsw.gov.au](http://ses.nsw.gov.au)) will be updated as new information becomes available. This map is current at the time of print. Please refer to [ses.nsw.gov.au](http://ses.nsw.gov.au) for the most up to date information.

**Copyright**  
© State of New South Wales, NSW State Emergency Service 2017 and © State of New South Wales, Land and Property Management Authority 2017.