



FloodSafe Factsheet

Evacuation Order to All Clear

Important steps between an Evacuation Order and an All Clear!

When you are required to evacuate, the NSW SES will issue an Evacuation Order advising people of what to do and where to go. Once it is safe for those people affected by this Evacuation Order to return to properties, the NSW SES will issue an 'All Clear'.

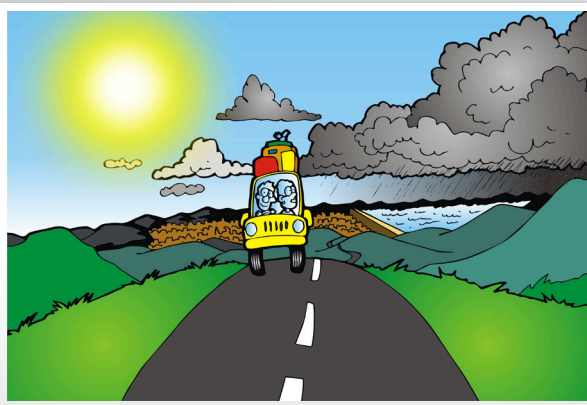
For some residents it is a nervous wait between the Evacuation Order and the All Clear. As those affected people are often anxious to return to their properties, assess the damage and begin the clean up.

However prior to declaring the area safe for residents to return to properties, there are a number of important assessments that must be made by agencies including the NSW SES, NSW Department of Public Works, Department of Housing, the local council, electricity and gas suppliers, and other organisations.



These assessments include but may not be limited to:

- The floodwater affecting the community has subsided to a safe level
- Floodwater has subsided to below the safe working level of a levee
- The health of the community is not affected by sewage and other pollutants
- The safety of the community is not affected by damaged infrastructure such as electricity or gas
- Any other significant safety issue



FOR EMERGENCY HELP IN
FLOODS AND STORMS CALL

132 500

For more info: www.ses.nsw.gov.au

Find us on: 

Follow us on: 

See us on: 

Principal Partner

