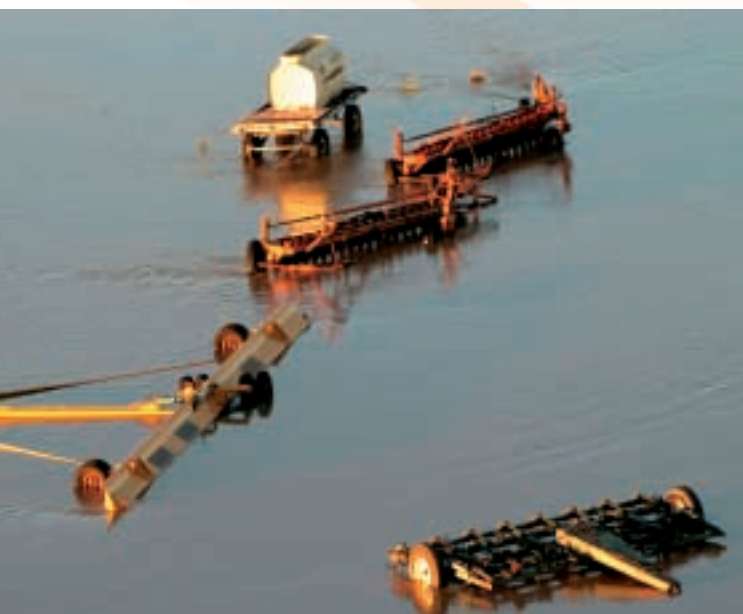


Pets

Pets may be taken to the temporary evacuation centre. They may stay there with you or be collected by the various welfare organisations and cared for until the danger has passed.

Don't leave your pets behind. Put them on leads or in pet carriers. Dogs should wear a fixed collar with an identification tag. Animal carriers should be labelled with the owners details. Take your pet's medication, feed and water with you.



Prepare yourself

Some basic measures you can take right now include keeping a list of emergency numbers near the telephone and assembling an emergency kit.

Your emergency kit should contain at all times:

- A portable radio with spare batteries
- A torch with spare batteries
- A first aid kit
- Rubber gloves
- Candles and waterproof matches
- A waterproof bag for valuables
- Emergency contact numbers

When flooding is likely, place in your emergency kit:

- Important papers and photos
- A good supply of required medications
- Any special requirements for babies and the disabled, infirm or elderly
- Sturdy shoes
- Fresh food and drinks
- Farm records



Every family and property owner should make an emergency kit.

How the SES can help you

The State Emergency Service is responsible for dealing with floods in NSW. This includes planning for floods and educating people about how to protect themselves and their property.

During floods, the SES is responsible for flood information, safety advice, evacuation, rescue and providing essentials to people cut off by flood waters.

How the NSW Department of Primary Industries can help you

Under the Agricultural Services Functional Area Supporting Plan, the NSW Department of Primary Industries is responsible for coordinating animal relief services for livestock, wildlife and companion animals. The NSW Department of Primary Industries is responsible for agriculture and animals in floods. Local agricultural coordinators in each area are responsible for planning, implementing and coordinating relief programs.

FOR EMERGENCY HELP IN FLOODS
AND STORMS CALL THE SES ON

132 500

SES Website	www.ses.nsw.gov.au
NSW Department of Primary Industries Website	www.dpi.nsw.gov.au
NSW Department of Primary Industries	02 6391 3100
Bureau of Meteorology Website	www.bom.gov.au



Protecting yourself from a flood

Rural Properties

Are you at risk?

New South Wales has a long history of floods. Some of these have been severe, costing an average of \$128 million damage annually. Approximately 28% of the land area of New South Wales is subject to flooding. According to the Australian Water Resources Council rural losses, in terms of average annual actual damage, are approximately equal to total urban losses.

The effects of flooding on rural property owners include losses to livestock, crops, fencing, buildings, personal items, farm equipment and machinery. While damage to crops and fences is usually unavoidable, there is scope to reduce losses particularly of livestock, irrigation equipment, houses and sheds.

As a rural property owner or manager you may have experienced many floods. It is important to be aware that larger floods than have ever been experienced in your area can occur. Even if your property is not directly affected by flooding, you may be isolated and require assistance such as the supply of essential items and feed for livestock.

While in many cases evacuation will not be necessary, you should consider evacuation as an option if severe flooding is predicted, as deciding to remain in your home when it is inundated or surrounded by flood waters can be dangerous. Flooding can last for weeks. Your home may become a refuge for vermin, snakes and spiders. There may be no water, sewerage, power, telephone or other services for several weeks, and you may be unable to call for help in an emergency.

Stay informed

Your local SES Unit can give you information on what you can do to reduce the effects of flooding on your family and your property. This brochure and general information on preparing for floods can be found at the SES website at www.ses.nsw.gov.au

The NSW Department of Primary Industries can also provide information for rural producers affected by severe floods. The NSW Department of Primary Industries website at www.dpi.nsw.gov.au has a range of articles relating to the effects on flooding on rural producers.

Your local SES and council may be able to provide you with information on how flooding affects your property.

How you will be advised of a coming flood

Flood information including flood forecasts, road closures, and advice on evacuations and property protection will be broadcast over local radio stations.

In some areas flood warnings are sent out by the SES using faxstream or telephone tree systems. Contact your local SES to find out how you would be advised.



When flooding is likely

- Lift household items and farm equipment on to benches and tables, electrical goods on top
- Secure objects that are likely to float and cause damage
- Locate important papers, valuables and mementoes, put them in your emergency kit and take them with you when you evacuate
- Check sheds and outbuildings and relocate waste containers, chemicals and poisons well above floor level
- Check if your neighbours need help
- Locate and prepare pets for possible evacuation
- If isolation is likely, have sufficient non-perishable food, essential medications, fuel and other necessities to last two weeks. Do not forget pet food and stockfeed
- Move livestock to high ground where they can be provided with feed for the duration of the flood
- Relocate fodder supplies to high ground
- Move farm equipment and relocate pumps to high ground

During a flood

- Avoid driving or walking through flood water - this is the main cause of death during floods as water may be deeper or faster flowing than you think and there may be hidden snags and debris
- If you cannot help your dogs, cats, horses and other livestock, you should notify the NSW Department of Primary Industries who are responsible for making sure that animals are looked after in an emergency
- Keep listening to a local radio station for further information and advice
- Keep in contact with your neighbours
- Be prepared to evacuate if advised

If evacuation is required

- Take your emergency kit with you
- Turn off the electricity and water as you leave and turn off and secure gas bottles

You should leave well before roads to high ground are closed by flood water. You can go to friends and relatives who live in flood-free areas, or you can go to an evacuation centre. Help will be available at the evacuation centre established by the Department of Community Services (DoCS) including:

- Temporary accommodation
- Financial help
- Personal support
- Refreshments and meals
- Clothing and personal needs
- Help in contacting family and friends

Where evacuation is necessary, and you have livestock, you should notify the NSW Department of Primary Industries with details of:

- A contact person and telephone number, and alternate contact number
- The location, type and number of animals
- Your handling facilities - yards, loading ramps, stock crates
- Availability of fodder/food
- Problem animals such as unbroken horses or savage dogs
- Any veterinary medication or health problems
- Whether you have a suitable vehicle for transporting the animals
- Whether you can transport the animals to a designated safe area or refuge
- Whether, after the immediate danger period or evacuation, you have any alternative accommodation for your pets or agistment for your livestock

You should also advise the SES or other emergency services that you are evacuating.